



Datasheet for ABIN1309724
LRIT3 Protein (AA 1-552) (GST tag)



[Go to Product page](#)

1 Image

Overview

Quantity:	10 µg
Target:	LRIT3
Protein Characteristics:	AA 1-552
Origin:	Human
Source:	Wheat germ
Protein Type:	Recombinant
Purification tag / Conjugate:	This LRIT3 protein is labelled with GST tag.
Application:	ELISA, Western Blotting (WB), Affinity Purification (AP), Antibody Array (AA)

Product Details

Purpose:	LRIT3 (Human) Recombinant Protein (P01)
Sequence:	<p>MPLLRTLDLH NNKITSVPNE ALRYLKNLAY LDLSSNRLTT LTPDFLENWT HLVSTPSGVL DLSPSRIILG LQDNPWFCDL HISKMIELSK VVDPAILLD PLMTCSEPER LTGILFQRAE LEHCLKPSVM TSATKIMSAL GSNVLLRCDA TGFPTPQITW TRSDSSPVNY TVIQESPEEG VRWSIMSLTG ISSKDAGDYK CKAKNLAGMS EAVVTVTVLG ITTTPPPDT SERTGDHPEW DVQPGSGRST SVSSASSYLW SSSFPTSSF SASTLSPPST ASFSLSPFSS STVSSTTTLS TSISASTTMA NKRSFQLHQG GKRNLKVAKN GSKLPPASTS KKEELALLDQ TMLTETNATI ENLRVSETK ESVTLMWNMI NTHNSAVTV LYSKYGGKDL LLLNADSSKN QVTIDGLEPG GQYMACVCPK GVPPQKDQCI TFSTERVEGD DSQWSLLLWV TSTACVVILP LICFLLYKVC KLQCKSEPFW EDDLAKETYI QFETLFPRSQ SVGELWTRSH RDDSEKLLLC SRSSVESQVT FKSEGSRPEY YC</p>
Characteristics:	Human LRIT3 full-length ORF (AAI04038.1, 1 a.a. - 552 a.a.) recombinant protein with GST-tag

Product Details

at N-terminal.

Purification: in vitro wheat germ expression system

Target Details

Target: LRIT3

Alternative Name: LRIT3 ([LRIT3 Products](#))

Background: Full Gene Name: leucine-rich repeat, immunoglobulin-like and transmembrane domains 3
Synonyms: FIGLER4,FLJ44691,MGC120618

Gene ID: 345193

Application Details

Application Notes: Optimal working dilution should be determined by the investigator.

Comment: Preparation method: in vitro, wheat germ expression system
Product Quality tested by: 12.5% SDS-PAGE Stained with Coomassie Blue.

Restrictions: For Research Use only

Handling

Buffer: 50 mM Tris-HCl, 10 mM reduced Glutathione, pH =8.0 in the elution buffer.

Handling Advice: Aliquot to avoid repeated freezing and thawing.

Storage: -80 °C

Storage Comment: Best use within three months from the date of receipt of this protein.

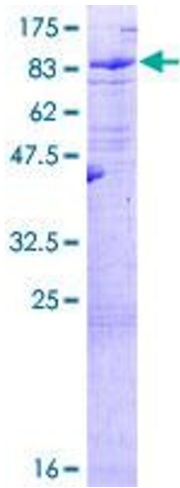


Image 1.