



[Go to Product page](#)

Datasheet for ABIN1309726

LRIT3 Protein (AA 422-496) (GST tag)

1 Image

Overview

Quantity:	10 µg
Target:	LRIT3
Protein Characteristics:	AA 422-496
Origin:	Human
Source:	Wheat germ
Protein Type:	Recombinant
Purification tag / Conjugate:	This LRIT3 protein is labelled with GST tag.
Application:	ELISA, Western Blotting (WB), Affinity Purification (AP), Antibody Array (AA)

Product Details

Purpose:	LRIT3 (Human) Recombinant Protein (Q01)
Sequence:	KVCKLQCKSE PFWEDDLAKE TYIQFETLFP RSQSVGELWT RSHRDDSEKL LLCSRSSVES QVTFKSEGSR PEYYC
Characteristics:	Human LRIT3 partial ORF (NP_940908, 422 a.a. - 496 a.a.) recombinant protein with GST-tag at N-terminal.
Purification:	in vitro wheat germ expression system

Target Details

Target:	LRIT3
Alternative Name:	LRIT3 (LRIT3 Products)

Target Details

Background:	Full Gene Name: leucine-rich repeat, immunoglobulin-like and transmembrane domains 3 Synonyms: FIGLER4,FLJ44691,MGC120618
Gene ID:	345193
NCBI Accession:	NM_198506

Application Details

Application Notes:	Optimal working dilution should be determined by the investigator.
Comment:	Preparation method: in vitro, wheat germ expression system Product Quality tested by: 12.5% SDS-PAGE Stained with Coomassie Blue.
Restrictions:	For Research Use only

Handling

Buffer:	50 mM Tris-HCl, 10 mM reduced Glutathione, pH =8.0 in the elution buffer.
Handling Advice:	Aliquot to avoid repeated freezing and thawing.
Storage:	-80 °C
Storage Comment:	Best use within three months from the date of receipt of this protein.

Images

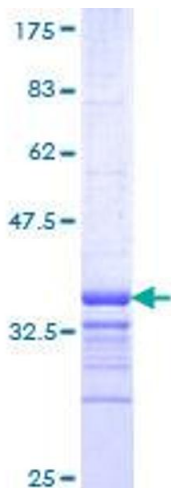


Image 1.