



[Go to Product page](#)

Datasheet for ABIN1309742

## LRRC10 Protein (AA 1-277) (GST tag)

### 1 Image

#### Overview

Quantity:	10 µg
Target:	LRRC10
Protein Characteristics:	AA 1-277
Origin:	Human
Source:	Wheat germ
Protein Type:	Recombinant
Purification tag / Conjugate:	This LRRC10 protein is labelled with GST tag.
Application:	ELISA, Western Blotting (WB), Affinity Purification (AP), Antibody Array (AA)

#### Product Details

Purpose:	LRRC10 (Human) Recombinant Protein (P01)
Sequence:	MGNTIRALVA FIPADRCQNY VVRDLREMP LDKMVDLSGSQ LRRFPLHVCS FRELVKLYLS DNHLNSLPPE LGQLQNLQIL ALDFNNFKAL PQVVCTLKQL CILYLGNNKL CDLPSELSLL QNLRTLWIEA NCLTQLPDVV CELSLLKTLH AGSNALRLLP GQLRRLQELR TIWLSGNRLT DFPTVLLHMP FLEVIDVDWN SIRYFPSLAH LSSLKLVYID HNPCRNPAPKV AKGVRRVGRW AEETPEPDPK KARRYALVRE ESQELQAPVP LLPPTNS
Characteristics:	Human LRRC10 full-length ORF ( NP_963844.2, 1 a.a. - 277 a.a.) recombinant protein with GST-tag at N-terminal.
Purification:	in vitro wheat germ expression system

## Target Details

Target:	LRRC10
Alternative Name:	LRRC10 ( <a href="#">LRRC10 Products</a> )
Background:	Full Gene Name: leucine rich repeat containing 10 Synonyms: HRLRRP,MGC125812
Gene ID:	376132
NCBI Accession:	<a href="#">NM_201550</a>

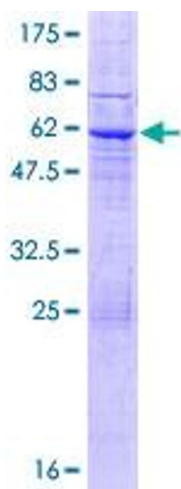
## Application Details

Application Notes:	Optimal working dilution should be determined by the investigator.
Comment:	Preparation method: in vitro, wheat germ expression system Product Quality tested by: 12.5% SDS-PAGE Stained with Coomassie Blue.
Restrictions:	For Research Use only

## Handling

Buffer:	50 mM Tris-HCl, 10 mM reduced Glutathione, pH =8.0 in the elution buffer.
Handling Advice:	Aliquot to avoid repeated freezing and thawing.
Storage:	-80 °C
Storage Comment:	Best use within three months from the date of receipt of this protein.

## Images



**Image 1.**