



[Go to Product page](#)

Datasheet for ABIN1309753

## LRRC20 Protein (AA 1-184) (GST tag)

### 1 Image

#### Overview

Quantity:	10 µg
Target:	LRRC20
Protein Characteristics:	AA 1-184
Origin:	Human
Source:	Wheat germ
Protein Type:	Recombinant
Purification tag / Conjugate:	This LRRC20 protein is labelled with GST tag.
Application:	ELISA, Western Blotting (WB), Affinity Purification (AP), Antibody Array (AA)

#### Product Details

Purpose:	LRRC20 (Human) Recombinant Protein (P01)
Sequence:	MLKKMGEEAVA RVARKVNETV ESGSDTLDLA ECKLVSFPIG IYKVLARNVSG QIHLITLANN ELKSLTSKFM TTFSQLRELH LEGNFLHRLP SEVSALQHLK AIDLSRNQFQ DFPEQLTALP ALETINLEEN EIVDVPVEKL AAMPALRSIN LRFNPLNAEV RVIAPPLIKF DMLMSPEGAR APLP
Characteristics:	Human LRRC20 full-length ORF ( NP_997002.1, 1 a.a. - 184 a.a.) recombinant protein with GST-tag at N-terminal.
Purification:	in vitro wheat germ expression system

#### Target Details

Target:	LRRC20
Alternative Name:	LRRC20 ( <a href="#">LRRC20 Products</a> )

## Target Details

Background: Full Gene Name: leucine rich repeat containing 20  
Synonyms: FLJ10751,FLJ10844

Gene ID: 55222

NCBI Accession: [NM\\_207119](#)

## Application Details

Application Notes: Optimal working dilution should be determined by the investigator.

Comment: Preparation method: in vitro, wheat germ expression system  
Product Quality tested by: 12.5% SDS-PAGE Stained with Coomassie Blue.

Restrictions: For Research Use only

## Handling

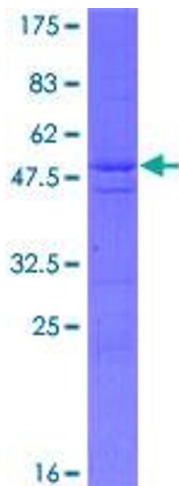
Buffer: 50 mM Tris-HCl, 10 mM reduced Glutathione, pH =8.0 in the elution buffer.

Handling Advice: Aliquot to avoid repeated freezing and thawing.

Storage: -80 °C

Storage Comment: Best use within three months from the date of receipt of this protein.

## Images



**Image 1.**