

Datasheet for ABIN1309755
LRRC23 Protein (AA 1-343) (GST tag)



[Go to Product page](#)

1 Image

Overview

Quantity:	10 µg
Target:	LRRC23
Protein Characteristics:	AA 1-343
Origin:	Human
Source:	Wheat germ
Protein Type:	Recombinant
Purification tag / Conjugate:	This LRRC23 protein is labelled with GST tag.
Application:	ELISA, Western Blotting (WB), Affinity Purification (AP), Antibody Array (AA)

Product Details

Purpose:	LRRC23 (Human) Recombinant Protein (P01)
Sequence:	MSDEDDLEDS EPDQDDSEKE EDEKETEAGE DYRKEGEEFP EEWLPTPLTE DMMKEGLSLL CKTGNGLAHA YVKLEVKERD LTDIYLLRSY IHLRYVDISE NHLTDLSPLN YLTHLLWLKA DGNLLRSAQM NELPYLQIAS FAYNQITDTE GISHPRLETL NLKGNSIHMV TGLDPEKLIS LHTVELRGNQ LESTLGINLP KLKNLYLAQN MLKKVEGLED LSNLTTLHLR DNQIDTLSGF SREMKSQYL NLRGNMVANL GELAKLRDLP KLRALVLLDN PCTDETSYRQ EALVQMPYLE RLDKEFYEEE ERAEADVIRQ RLKEEKEQEP EPQRDLEPEQ SLI
Characteristics:	Human LRRC23 full-length ORF (AAH29858.1, 1 a.a. - 343 a.a.) recombinant protein with GST-tag at N-terminal.
Purification:	in vitro wheat germ expression system

Target Details

Target:	LRRC23
Alternative Name:	LRRC23 (LRRC23 Products)
Background:	Full Gene Name: leucine rich repeat containing 23 Synonyms: LRPB7
Gene ID:	10233

Application Details

Application Notes:	Optimal working dilution should be determined by the investigator.
Comment:	Preparation method: in vitro, wheat germ expression system Product Quality tested by: 12.5% SDS-PAGE Stained with Coomassie Blue.
Restrictions:	For Research Use only

Handling

Buffer:	50 mM Tris-HCl, 10 mM reduced Glutathione, pH =8.0 in the elution buffer.
Handling Advice:	Aliquot to avoid repeated freezing and thawing.
Storage:	-80 °C
Storage Comment:	Best use within three months from the date of receipt of this protein.

Images

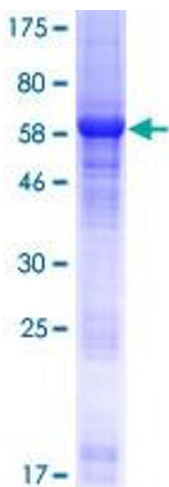


Image 1.