



[Go to Product page](#)

Datasheet for ABIN1309757

LRRC27 Protein (AA 1-383) (GST tag)

1 Image

Overview

Quantity:	25 µg
Target:	LRRC27
Protein Characteristics:	AA 1-383
Origin:	Human
Source:	Wheat germ
Protein Type:	Recombinant
Purification tag / Conjugate:	This LRRC27 protein is labelled with GST tag.
Application:	ELISA, Western Blotting (WB), Affinity Purification (AP), Antibody Array (AA)

Product Details

Purpose:	LRRC27 (Human) Recombinant Protein (P01)
Sequence:	MEGSSSYEVP SVAAADLEEG AGQTRSLPAT PSKDVHKGVG GIIFSSSPIL DLSESGLCRL EEVFRIPSLQ QLHLQRNALC VIPQDFQLL PNLTWLDLRY NRIKALPSGI GAHQHLKTL LERNPIKMLP VELGSVTTLK ALNLRHCPLE FPPQLVVQKG LVAIQRFLRM WAVEHSLPRN PTSQEAPPVR EMTLRDLPSP GLELSGDHAS NQGAVNAQDP EGAVMKEKAS FLPPVEKPD SELRKSADSS ENWPSEEEIR RFWKLRQEIV EHVKADVLGD QLLTRELPPN LKAALNIEKE LPKPRHVFRR KTASSRSILP DLLSPYQMAI RAKRLEESRA AALRELQEKQ ALMEQRRPF LLIFPRVFQA LTRSSGRFIL VLL
Characteristics:	Human LRRC27 full-length ORF (AAH50097.1, 1 a.a. - 383 a.a.) recombinant protein with GST-tag at N-terminal.
Purification:	in vitro wheat germ expression system

Target Details

Target:	LRRC27
Alternative Name:	LRRC27 (LRRC27 Products)
Background:	Full Gene Name: leucine rich repeat containing 27 Synonyms:
Gene ID:	80313

Application Details

Application Notes:	Optimal working dilution should be determined by the investigator.
Comment:	Preparation method: in vitro, wheat germ expression system Product Quality tested by: 12.5% SDS-PAGE Stained with Coomassie Blue.
Restrictions:	For Research Use only

Handling

Buffer:	50 mM Tris-HCl, 10 mM reduced Glutathione, pH =8.0 in the elution buffer.
Handling Advice:	Aliquot to avoid repeated freezing and thawing.
Storage:	-80 °C
Storage Comment:	Best use within three months from the date of receipt of this protein.

Images

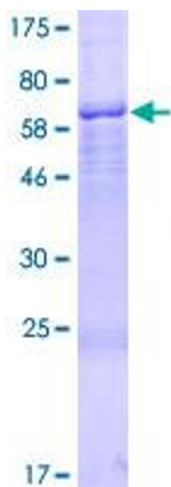


Image 1.