



[Go to Product page](#)

Datasheet for ABIN1309767

LRRC39 Protein (AA 1-335) (GST tag)

1 Image

Overview

Quantity:	10 µg
Target:	LRRC39
Protein Characteristics:	AA 1-335
Origin:	Human
Source:	Wheat germ
Protein Type:	Recombinant
Purification tag / Conjugate:	This LRRC39 protein is labelled with GST tag.
Application:	ELISA, Western Blotting (WB), Affinity Purification (AP), Antibody Array (AA)

Product Details

Purpose:	LRRC39 (Human) Recombinant Protein (P01)
Sequence:	MTENVVCTGA VNAVKEVWEK RIKKLNEDLK REKEFQHKLV RIWEERVSLT KLREKVTRED GRVILKIEKE EWKTLPSSLL KLNQLQEWQL HRTGLLKIPE FIGRFQNLIV LDLSRNTISE IPPGIGLLTR LQELILSYNK IKTVPKELSN CASLEKLELA VNRDICDLPQ ELSNLLKLTH LDLSMNDFTT IPLAVLNMPA LEWLDMGSNK LEQLPDTIER MQNLHTLWLQ RNEITCLPQT ISNMKNLGT LVSNNKLQDI PVCMEEMANL RFVNFRDNPL KLVSLPPSE GTDEEEEREL FGLQFMHTYI QESRRRADHQ VNGSTTLPI SINTDG
Characteristics:	Human LRRC39 full-length ORF (NP_653221.1, 1 a.a. - 335 a.a.) recombinant protein with GST-tag at N-terminal.
Purification:	in vitro wheat germ expression system

Target Details

Target:	LRRC39
Alternative Name:	LRRC39 (LRRC39 Products)
Background:	Full Gene Name: leucine rich repeat containing 39 Synonyms: DKFZp31301122,MGC14816
Gene ID:	127495
NCBI Accession:	NM_144620

Application Details

Application Notes:	Optimal working dilution should be determined by the investigator.
Comment:	Preparation method: in vitro, wheat germ expression system Product Quality tested by: 12.5% SDS-PAGE Stained with Coomassie Blue.
Restrictions:	For Research Use only

Handling

Buffer:	50 mM Tris-HCl, 10 mM reduced Glutathione, pH =8.0 in the elution buffer.
Handling Advice:	Aliquot to avoid repeated freezing and thawing.
Storage:	-80 °C
Storage Comment:	Best use within three months from the date of receipt of this protein.

Images

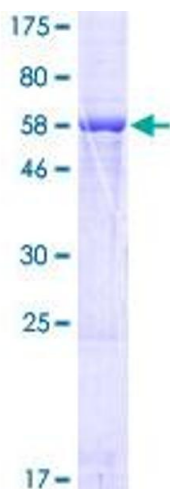


Image 1.