

Datasheet for ABIN1309780

LRRC49 Protein (AA 1-685) (GST tag)



[Go to Product page](#)

1 Image

Overview

Quantity:	25 µg
Target:	LRRC49
Protein Characteristics:	AA 1-685
Origin:	Human
Source:	Wheat germ
Protein Type:	Recombinant
Purification tag / Conjugate:	This LRRC49 protein is labelled with GST tag.
Application:	ELISA, Western Blotting (WB), Affinity Purification (AP), Antibody Array (AA)

Product Details

Purpose:	LRRC49 (Human) Recombinant Protein (P01)
Sequence:	<p>MIPGKYRSVS GRAANNVNCG LHLVIQTSSL PEKNKVEFKL NKDTSSFPGR LLQHDLERNY</p> <p>SSRQGDHINL VSSSLSSFPI LQRSSEKIL YSDRLSLERQ KLTVCPIING EDHLRLLNFQ</p> <p>HNFITRIQNI SNLQKLISLD LYDNQIEEIS GLSTLRCLRV LLLGKNRIKK ISNLENLKSL DVLDLHGNQI</p> <p>TKIENINHLC ELRVLNLARN FLSHVDNLNG LDSLTELNLR HNQITFVRDV DNLPCQLHLF</p> <p>LSFNNISSFD SVSCLADSSS LSDITFDGNP IAQESWYKHT VLQNMMLRQ LDMKRITEEE</p> <p>RRMASVLAKK EEEKKRESHK QSLLEKPKRL TINNVARQWD LQQRVANIAT NEDRKDSDSP</p> <p>QDPCQIDGST LSAFPEETGP LDSGLNNALQ GLSVIDTYLV EVDGDTLSLY GSGALESLDR</p> <p>NWSVQTAGMI TTVSFTFIEF DEIVQVLPKL KIKFPNSLHL KFKETNLVML QQFNALAQLR</p> <p>RIDQLTIDPQ GNPVVNFTLW KYYVLFRLSH FSMQKINGTE VTQNDMIMAE RLFGILAHVA</p> <p>SSELPQYRLI SILGDARKKQ FRYLLESKKG KPGIINEENN DSKRLVGENT NRATLNYTTR</p> <p>DFYNEKLEEI KEKKKFKCTY IEDLVKEATE INMKNEALQK LWPQMFIELV RDAVIEIRNK</p>

Product Details

NSYMKLCLQQ ITDQK

Characteristics: Human LRRC49 full-length ORF (AAH37982.1, 1 a.a. - 685 a.a.) recombinant protein with GST-tag at N-terminal.

Purification: in vitro wheat germ expression system

Target Details

Target: LRRC49

Alternative Name: LRRC49 ([LRRC49 Products](#))

Background: Full Gene Name: leucine rich repeat containing 49
Synonyms: FLJ20156

Gene ID: 54839

Application Details

Application Notes: Optimal working dilution should be determined by the investigator.

Comment: Preparation method: in vitro, wheat germ expression system
Product Quality tested by: 12.5% SDS-PAGE Stained with Coomassie Blue.

Restrictions: For Research Use only

Handling

Buffer: 50 mM Tris-HCl, 10 mM reduced Glutathione, pH =8.0 in the elution buffer.

Handling Advice: Aliquot to avoid repeated freezing and thawing.

Storage: -80 °C

Storage Comment: Best use within three months from the date of receipt of this protein.

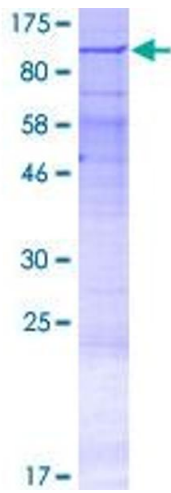


Image 1.