



[Go to Product page](#)

Datasheet for ABIN1309785

## LRRC55 Protein (AA 1-341) (GST tag)

### 1 Image

#### Overview

Quantity:	10 µg
Target:	LRRC55
Protein Characteristics:	AA 1-341
Origin:	Human
Source:	Wheat germ
Protein Type:	Recombinant
Purification tag / Conjugate:	This LRRC55 protein is labelled with GST tag.
Application:	ELISA, Western Blotting (WB), Affinity Purification (AP), Antibody Array (AA)

#### Product Details

Purpose:	LRRC55 (Human) Recombinant Protein (P01)
Sequence:	MLRSPTFTDA GPRCSCLPVS QTLDSMDTVL MGS LQHCCCL LPKMGDTWAQ LPWPGPPHPA MLLISLLAA GLMHSDAGTS CPVLCTCRNQ VVDCSSQLRF SVPPDLPMDT RNLSLAHNRI TAVPPGYLTC YMELQVLDLH NNSLMELPRG LFLHAKRLAH LDLSYNNFSH VPADMFQEAH GLVHIDLSHN PWLRRVHPQA FQGLMQLRDL DLSYGGLAFL SLEALEGLPG LVTLQIGGNP WVCGCTMEPL LKWLRNRIQR CTADSQAEC RGPPEVEGAP LFSLTEESFK ACHLTLTLDL YLFIAFVGFV VSIASVATNF LLGITANCCH RWSKASEEEE I
Characteristics:	Human LRRC55 full-length ORF ( NP_001005210.1, 1 a.a. - 341 a.a.) recombinant protein with GST-tag at N-terminal.
Purification:	in vitro wheat germ expression system

## Target Details

Target:	LRRC55
Alternative Name:	LRRC55 ( <a href="#">LRRC55 Products</a> )
Background:	Full Gene Name: leucine rich repeat containing 55 Synonyms: FLJ45686
Gene ID:	219527
NCBI Accession:	<a href="#">NM_001005210</a>

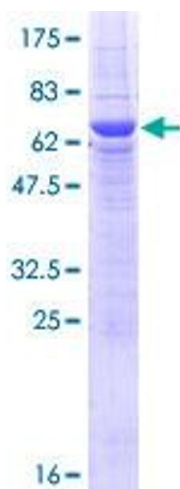
## Application Details

Application Notes:	Optimal working dilution should be determined by the investigator.
Comment:	Preparation method: in vitro, wheat germ expression system Product Quality tested by: 12.5% SDS-PAGE Stained with Coomassie Blue.
Restrictions:	For Research Use only

## Handling

Buffer:	50 mM Tris-HCl, 10 mM reduced Glutathione, pH =8.0 in the elution buffer.
Handling Advice:	Aliquot to avoid repeated freezing and thawing.
Storage:	-80 °C
Storage Comment:	Best use within three months from the date of receipt of this protein.

## Images



**Image 1.**