



[Go to Product page](#)

Datasheet for ABIN1309791

LRRC6 Protein (AA 1-466) (GST tag)

1 Image

Overview

Quantity:	10 µg
Target:	LRRC6
Protein Characteristics:	AA 1-466
Origin:	Human
Source:	Wheat germ
Protein Type:	Recombinant
Purification tag / Conjugate:	This LRRC6 protein is labelled with GST tag.
Application:	ELISA, Western Blotting (WB), Affinity Purification (AP), Antibody Array (AA)

Product Details

Purpose:	LRRC6 (Human) Recombinant Protein (P01)
Sequence:	MGWITEDLIR RNAEHND CVI FSLEELSLHQ QEIERLEHID KWCRDLKILY LQNNLIGKIE NVSKLKKLEY LNLALNNIEK IENLEGCEEL AKLDLTVNFI GELSSIKNLQ HNIHLKELFL MGNPCASFDH YREFVVATLP QLKWLDGKEI EPSEKALQ DYSVIEPQIR EQEKDHCLKR AKLKEEAQRK HQEEDKNEDK RSNAGFDGRW YTDINATLSS LESKDHLQAP DTEEHNTKKL DNSEDDLEFW NKPCLFTPES RLETLRHMEK QRKKQEKLSE KKKKVKPPRT LITEDGKALN VNEPKIDFSL KDNEKQIILD LAVYRYMDTS LIDVDVQPTY VRVMIKGKPF QLVLP AEVKP DSSSAKRSQT TGHLVICMPK VGEVITGGQR AFKSMKTTSD RSREQTNTRS KHMEKLEVDP SKHSFPDVTN IVQEKKHTPR RRPEPKIIPS EEDPTFEDNP EVPLLI
Characteristics:	Human LRRC6 full-length ORF (NP_036604.2, 1 a.a. - 466 a.a.) recombinant protein with GST-tag at N-terminal.

Product Details

Purification: in vitro wheat germ expression system

Target Details

Target: LRRC6

Alternative Name: LRRC6 ([LRRC6 Products](#))

Background: Full Gene Name: leucine rich repeat containing 6
Synonyms: LRTP,TSLRP

Gene ID: 23639

NCBI Accession: [NM_012472](#)

Pathways: [M Phase](#)

Application Details

Application Notes: Optimal working dilution should be determined by the investigator.

Comment: Preparation method: in vitro, wheat germ expression system
Product Quality tested by: 12.5% SDS-PAGE Stained with Coomassie Blue.

Restrictions: For Research Use only

Handling

Buffer: 50 mM Tris-HCl, 10 mM reduced Glutathione, pH =8.0 in the elution buffer.

Handling Advice: Aliquot to avoid repeated freezing and thawing.

Storage: -80 °C

Storage Comment: Best use within three months from the date of receipt of this protein.

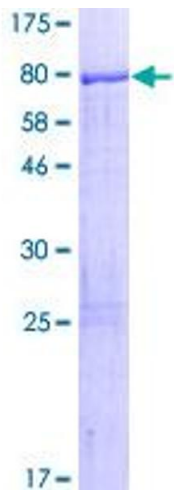


Image 1.