

Datasheet for ABIN1309793
LRRC61 Protein (AA 1-259) (GST tag)



[Go to Product page](#)

1 Image

Overview

Quantity:	10 µg
Target:	LRRC61
Protein Characteristics:	AA 1-259
Origin:	Human
Source:	Wheat germ
Protein Type:	Recombinant
Purification tag / Conjugate:	This LRRC61 protein is labelled with GST tag.
Application:	ELISA, Western Blotting (WB), Affinity Purification (AP), Antibody Array (AA)

Product Details

Purpose:	LRRC61 (Human) Recombinant Protein (P01)
Sequence:	MDPPAEKPGE AGGLQITPQL LKSRTGEFSL ESILLKLRG LGLADLGCLG ECLGLEWLDL SGNALTHLGP LASLRQLAVL NVSNRNL TGL EPLATCENLQ SLNAAGNLLA TPGQLQCLAG LPCLEYLRLR DPLARLSNPL CANPSYWAAV RELLPLKVI DGERVIGRGS EFYQLCRDLD SSLRPSSSPG PRATEAQPWW EPGYWESWPS RSSSILEEAC RQFQDTLQEC WDLDRQASDS LAQAEQVLSS AGPTSSFVF
Characteristics:	Human LRRC61 full-length ORF (NP_076431.1, 1 a.a. - 259 a.a.) recombinant protein with GST-tag at N-terminal.
Purification:	in vitro wheat germ expression system

Target Details

Target:	LRRC61
Alternative Name:	LRRC61 (LRRC61 Products)
Background:	Full Gene Name: leucine rich repeat containing 61 Synonyms: FLJ22216,FLJ31392,HSPC295,MGC3036
Gene ID:	65999
NCBI Accession:	NM_023942

Application Details

Application Notes:	Optimal working dilution should be determined by the investigator.
Comment:	Preparation method: in vitro, wheat germ expression system Product Quality tested by: 12.5% SDS-PAGE Stained with Coomassie Blue.
Restrictions:	For Research Use only

Handling

Buffer:	50 mM Tris-HCl, 10 mM reduced Glutathione, pH =8.0 in the elution buffer.
Handling Advice:	Aliquot to avoid repeated freezing and thawing.
Storage:	-80 °C
Storage Comment:	Best use within three months from the date of receipt of this protein.

Images

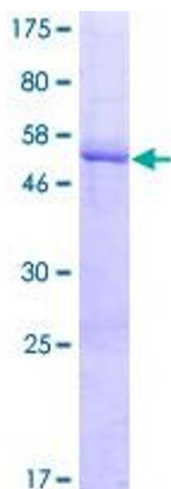


Image 1.