



[Go to Product page](#)

Datasheet for ABIN1309797

LRRC8B Protein (AA 1-803) (GST tag)

1 Image

Overview

Quantity:	10 µg
Target:	LRRC8B
Protein Characteristics:	AA 1-803
Origin:	Human
Source:	Wheat germ
Protein Type:	Recombinant
Purification tag / Conjugate:	This LRRC8B protein is labelled with GST tag.
Application:	ELISA, Western Blotting (WB), Affinity Purification (AP), Antibody Array (AA)

Product Details

Purpose:	LRRC8B (Human) Recombinant Protein (P01)
Sequence:	MITLTELKCL ADAQSSYHIL KPWWDFVWYY ITLIMLLVAV LAGALQLTQS RVLCCLPCKV EFDNHCAVPW DILKASMNTS SNPGTPLPLP LRIQNDLHRQ QYSYIDAVCY EKQLHWFAPK FPYLVLLHTL IFAACSNFWL HYPSTSSRLE HFVAILHKCF DSPWTTRALS ETVAEQSVRP LKLSKSKILL SSSGCSADID SGKQSLPYPQ PGLSAGIES PTSSVLDKKE GEQAKAIFEK VKRFRMHVEQ KDIYRVYVK QIIVKILFV LIITYVPYFL THITLEIDCS VDVQAFTGYK RYQCVYSLAE IFKVLASFYV ILVILYGLTS SYSLWWMLRS SLKQYSFEAL REKSNYSYDIP DVKNDFAFIL HLADQYDPLY SKRFSIFLSE VSENKLNKQIN LNNEWTVEKL KSKLVKNAQD KIELHLFMLN GLPDNVFELT EMEVLSLELI PEVKLPYSAVS QLVNLKELRV YHSSLVVDHP ALAFLEENLK ILRLKFTMG KIPRWVFLK NLKELYLSGC VLPEQLSTMQ LEGFQDLKLN RTLYLKSSLS RIPQVVDLL PSLQKLSLDN EGSKLVVLLN LKKMVNLKSL ELISCDLERI PHSIFSLNNL HELDLRENNL KTVEEIIISFQ HLQNLSCCLK WHNNIAYIPA QIGALSNEIQ LSLDHNNIEN

Product Details

LPLQLFLCTK LHYLDLSYNH LTFIPEEIQY LSNLQYFAVT NNNIEMLPDG LQCKKLQCL
LLGKNSLMNL SPHVGELSNL THLELIGNYL ETLPPELEGC QSLKRNCLIV EENLLNTLPL
PVTERLQTCL DKC

Characteristics: Human LRRC8B full-length ORF (NP_056165.1, 1 a.a. - 803 a.a.) recombinant protein with GST-tag at N-terminal.

Purification: in vitro wheat germ expression system

Target Details

Target: LRRC8B

Alternative Name: LRRC8B ([LRRC8B Products](#))

Background: Full Gene Name: leucine rich repeat containing 8 family, member B
Synonyms: KIAA0231,MGC42220,TA-LRRP

Gene ID: 23507

NCBI Accession: [NM_015350](#)

Application Details

Application Notes: Optimal working dilution should be determined by the investigator.

Comment: Preparation method: in vitro, wheat germ expression system
Product Quality tested by: 12.5% SDS-PAGE Stained with Coomassie Blue.

Restrictions: For Research Use only

Handling

Buffer: 50 mM Tris-HCl, 10 mM reduced Glutathione, pH =8.0 in the elution buffer.

Handling Advice: Aliquot to avoid repeated freezing and thawing.

Storage: -80 °C

Storage Comment: Best use within three months from the date of receipt of this protein.

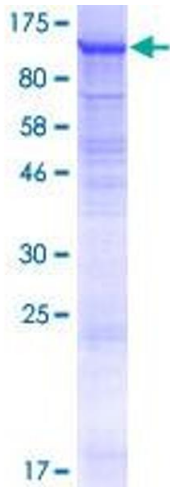


Image 1.