



[Go to Product page](#)

Datasheet for ABIN1309808  
**LRRIQ1 Protein (AA 1-240) (GST tag)**

1 Image

Overview

Quantity:	10 µg
Target:	LRRIQ1
Protein Characteristics:	AA 1-240
Origin:	Human
Source:	Wheat germ
Protein Type:	Recombinant
Purification tag / Conjugate:	This LRRIQ1 protein is labelled with GST tag.
Application:	Affinity Purification (AP), Antibody Array (AA), ELISA, Western Blotting (WB)

Product Details

Purpose:	LRRIQ1 (Human) Recombinant Protein (P01)
Sequence:	MDDDDAKLKA EIEAELDKLS ISSLEKEDIE SDAKSETQSD DSDTDVELP ESVLHCINII KNRSKAVEEL ILQDLEDILS CSYGAVSNNH MHLRTGLSTE YEESSQLIK ILSEIEKEEF MRSKTDCA TP D FVPEPSPHD LPMDEHVLPD DADINFGYCE VEEKCRQSFE AWQEKQKELE DKEKQTLKAQ RDREEKQFQE EEEKRHCWMK QFKVEKKKLE NIQKVFCFCF SCIFKISSYL
Characteristics:	Human LRRIQ1 full-length ORF ( AAH05399.1, 1 a.a. - 240 a.a.) recombinant protein with GST-tag at N-terminal.
Purification:	in vitro wheat germ expression system

Target Details

Target:	LRRIQ1
---------	--------

## Target Details

---

Alternative Name:	LRRIQ1 ( <a href="#">LRRIQ1 Products</a> )
Background:	Full Gene Name: leucine-rich repeats and IQ motif containing 1 Synonyms: FLJ12303
Gene ID:	84125

## Application Details

---

Application Notes:	Optimal working dilution should be determined by the investigator.
Comment:	Preparation method: in vitro, wheat germ expression system Product Quality tested by: 12.5% SDS-PAGE Stained with Coomassie Blue.
Restrictions:	For Research Use only

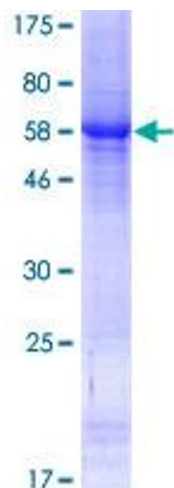
## Handling

---

Buffer:	50 mM Tris-HCl, 10 mM reduced Glutathione, pH =8.0 in the elution buffer.
Handling Advice:	Aliquot to avoid repeated freezing and thawing.
Storage:	-80 °C
Storage Comment:	Best use within three months from the date of receipt of this protein.

## Images

---



**Image 1.**