

Datasheet for ABIN1309810
LRRIQ3 Protein (AA 1-199) (GST tag)



[Go to Product page](#)

1 Image

Overview

Quantity:	25 µg
Target:	LRRIQ3
Protein Characteristics:	AA 1-199
Origin:	Human
Source:	Wheat germ
Protein Type:	Recombinant
Purification tag / Conjugate:	This LRRIQ3 protein is labelled with GST tag.
Application:	ELISA, Western Blotting (WB), Affinity Purification (AP), Antibody Array (AA)

Product Details

Purpose:	LRRC44 (Human) Recombinant Protein (P01)
Sequence:	MFHGTVTEEL TSHEEWSHYN ENIREGQKDF VVVKFNGHLH KSMENLQSCI SLRVCIFSNN FITDIHPLQS CIKLIKLDLH GNQIKSLPNT KFWNGLKNLK LLYLHDNGFA KLKNICVLSA CPTLIALTMF DCPVSLKKG Y RHLVNSIWP LKALDHHVIS DEEIQNWHL PERFKACNHR LFFNFPCALR KEKMKHSEV
Characteristics:	Human LRRC44 full-length ORF (NP_660301.1, 1 a.a. - 199 a.a.) recombinant protein with GST-tag at N-terminal.
Purification:	in vitro wheat germ expression system

Target Details

Target:	LRRIQ3
---------	--------

Target Details

Alternative Name:	LRRIQ3 (LRRIQ3 Products)
Background:	Full Gene Name: leucine-rich repeats and IQ motif containing 3 Synonyms: LRRC44,MGC22773
Gene ID:	127255

Application Details

Application Notes:	Optimal working dilution should be determined by the investigator.
Comment:	Preparation method: in vitro, wheat germ expression system Product Quality tested by: 12.5% SDS-PAGE Stained with Coomassie Blue.
Restrictions:	For Research Use only

Handling

Buffer:	50 mM Tris-HCl, 10 mM reduced Glutathione, pH =8.0 in the elution buffer.
Handling Advice:	Aliquot to avoid repeated freezing and thawing.
Storage:	-80 °C
Storage Comment:	Best use within three months from the date of receipt of this protein.

Images

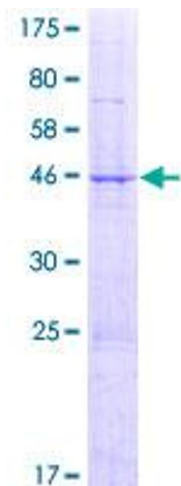


Image 1.