

Datasheet for ABIN1309830
LRTM1 Protein (AA 1-345) (GST tag)



[Go to Product page](#)

1 Image

Overview

Quantity:	10 µg
Target:	LRTM1
Protein Characteristics:	AA 1-345
Origin:	Human
Source:	Wheat germ
Protein Type:	Recombinant
Purification tag / Conjugate:	This LRTM1 protein is labelled with GST tag.
Application:	ELISA, Western Blotting (WB), Affinity Purification (AP), Antibody Array (AA)

Product Details

Purpose:	LRTM1 (Human) Recombinant Protein (P01)
Sequence:	MKGELLLFSS VIVLLQVVCS CPDKCYCQSS TNFVDCSQQG LAEIPSHLPP QTRTLHLQDN QIHHLPAFAF RSVPWLMTLN LSNNSLSNLA PGAFHGLQHL QVLNLTQNSL LSLESRLFHS LPQLRELDLS SNNISHLPTS LGETWENLTI LAVQQNQLQQ LDRALLESMP SVRLLLLKDN LWKCNCHLLG LKLWLEKFVY KGGLTDGIIC ESPDTWKGKD LLRIPHELYQ PCPLPAPDPV SSQAQWPGSA HGVVLRPPEN HNAGERELLE CELKPKPRPA NLRHAIATVI ITGVVCGIVC LMMLAAAIYG CTYAAITAQY HGGPLAQTND PGKVEEKERF DSSPA
Characteristics:	Human LRTM1 full-length ORF (NP_065729.1, 1 a.a. - 345 a.a.) recombinant protein with GST-tag at N-terminal.
Purification:	in vitro wheat germ expression system

Target Details

Target:	LRTM1
Alternative Name:	LRTM1 (LRTM1 Products)
Background:	Full Gene Name: leucine-rich repeats and transmembrane domains 1 Synonyms: HT017
Gene ID:	57408
NCBI Accession:	NM_020678

Application Details

Application Notes:	Optimal working dilution should be determined by the investigator.
Comment:	Preparation method: in vitro, wheat germ expression system Product Quality tested by: 12.5% SDS-PAGE Stained with Coomassie Blue.
Restrictions:	For Research Use only

Handling

Buffer:	50 mM Tris-HCl, 10 mM reduced Glutathione, pH =8.0 in the elution buffer.
Handling Advice:	Aliquot to avoid repeated freezing and thawing.
Storage:	-80 °C
Storage Comment:	Best use within three months from the date of receipt of this protein.

Images

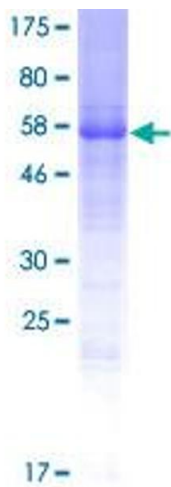


Image 1.