

Datasheet for ABIN1309839  
**LSM12B Protein (AA 1-195) (GST tag)**



[Go to Product page](#)

1 Image

Overview

Quantity:	10 µg
Target:	LSM12B
Protein Characteristics:	AA 1-195
Origin:	Human
Source:	Wheat germ
Protein Type:	Recombinant
Purification tag / Conjugate:	This LSM12B protein is labelled with GST tag.
Application:	ELISA, Western Blotting (WB), Affinity Purification (AP), Antibody Array (AA)

Product Details

Purpose:	LSM12 (Human) Recombinant Protein (P01)
Sequence:	MAAPPGEYFS VGSQVSCRTC QEQLQGEV AFDYQSKMLA LKCPSSSGKP NHADILLINL QYVSEVEIIN DRTETPPPLA SLNVSKLASK ARTEKEEKLS QAYAISAGVS LEGQQLFQTI HKTIKDCKWQ EKNIVVMEEV VITPPYQVEN CKGKEGSALS HVRKIVEKHF RDVESQKILQ RSQAQQPQKE AALSS
Characteristics:	Human LSM12 full-length ORF ( NP_689557.1, 1 a.a. - 195 a.a.) recombinant protein with GST-tag at N-terminal.
Purification:	in vitro wheat germ expression system

Target Details

Target:	LSM12B
---------	--------

## Target Details

Alternative Name:	LSM12 ( <a href="#">LSM12B Products</a> )
Background:	Full Gene Name: LSM12 homolog ( <i>S. cerevisiae</i> ) Synonyms: FLJ30656,MGC104211,PNAS-135
Gene ID:	124801
NCBI Accession:	<a href="#">NM_152344</a>

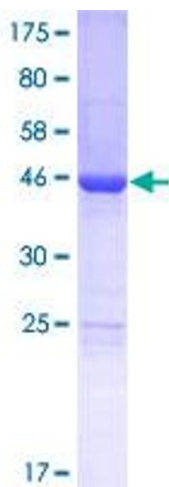
## Application Details

Application Notes:	Optimal working dilution should be determined by the investigator.
Comment:	Preparation method: in vitro, wheat germ expression system Product Quality tested by: 12.5% SDS-PAGE Stained with Coomassie Blue.
Restrictions:	For Research Use only

## Handling

Buffer:	50 mM Tris-HCl, 10 mM reduced Glutathione, pH =8.0 in the elution buffer.
Handling Advice:	Aliquot to avoid repeated freezing and thawing.
Storage:	-80 °C
Storage Comment:	Best use within three months from the date of receipt of this protein.

## Images



**Image 1.**