



[Go to Product page](#)

Datasheet for ABIN1309846

## LSM4 Protein (AA 1-139) (GST tag)

### 1 Image

#### Overview

Quantity:	10 µg
Target:	LSM4
Protein Characteristics:	AA 1-139
Origin:	Human
Source:	Wheat germ
Protein Type:	Recombinant
Purification tag / Conjugate:	This LSM4 protein is labelled with GST tag.
Application:	ELISA, Western Blotting (WB), Affinity Purification (AP), Antibody Array (AA)

#### Product Details

Purpose:	LSM4 (Human) Recombinant Protein (P01)
Sequence:	MLPLSLLKTA QNHPMLVELK NGETYNGHLV SCDNWMNINL REVICTSRDG DKFWRMPECY IRGSTIKYLR IPDEIIDMVK EEVAKGRGR GGLQQKQKQK GRGMGGAGRG VFGGRGRGGI PGTGRGQPEK KPGRQAGKQ
Characteristics:	Human LSM4 full-length ORF ( NP_036453.1, 1 a.a. - 139 a.a.) recombinant protein with GST-tag at N-terminal.
Purification:	in vitro wheat germ expression system

#### Target Details

Target:	LSM4
Alternative Name:	LSM4 ( <a href="#">LSM4 Products</a> )

## Target Details

Background:	Full Gene Name: LSM4 homolog, U6 small nuclear RNA associated ( <i>S. cerevisiae</i> ) Synonyms: YER112W
Gene ID:	25804
NCBI Accession:	<a href="#">NM_012321</a>

## Application Details

Application Notes:	Optimal working dilution should be determined by the investigator.
Comment:	Preparation method: in vitro, wheat germ expression system Product Quality tested by: 12.5% SDS-PAGE Stained with Coomassie Blue.
Restrictions:	For Research Use only

## Handling

Buffer:	50 mM Tris-HCl, 10 mM reduced Glutathione, pH =8.0 in the elution buffer.
Handling Advice:	Aliquot to avoid repeated freezing and thawing.
Storage:	-80 °C
Storage Comment:	Best use within three months from the date of receipt of this protein.

## Images

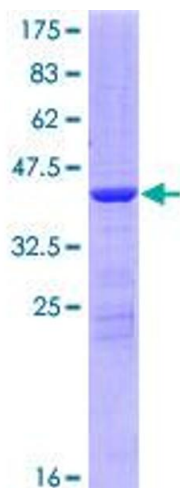


Image 1.