

Datasheet for ABIN1309859
LSS Protein (AA 633-732) (GST tag)



[Go to Product page](#)

1 Image

Overview

Quantity:	10 µg
Target:	LSS
Protein Characteristics:	AA 633-732
Origin:	Human
Source:	Wheat germ
Protein Type:	Recombinant
Purification tag / Conjugate:	This LSS protein is labelled with GST tag.
Application:	Western Blotting (WB), ELISA, Affinity Purification (AP), Antibody Array (AA)

Product Details

Purpose:	LSS (Human) Recombinant Protein (Q01)
Sequence:	FESCEERRY L QSAQSQIHNT CWAMMGLMAV RHPDIEAQER GVRCLLEKQL PNGDWQPQENI AGVFNKSCAI SYTSYRNIFP IWALGRFSQL YPERALAGHP
Characteristics:	Human LSS partial ORF (NP_001001438.1, 633 a.a. - 732 a.a.) recombinant protein with GST-tag at N-terminal.
Purification:	in vitro wheat germ expression system

Target Details

Target:	LSS
Alternative Name:	LSS (LSS Products)

Target Details

Background:	Full Gene Name: lanosterol synthase (2,3-oxidosqualene-lanosterol cyclase) Synonyms: FLJ25486,FLJ35015,FLJ39450,FLJ46393,OSC
Gene ID:	4047
NCBI Accession:	NM_001001438

Application Details

Application Notes:	Optimal working dilution should be determined by the investigator.
Comment:	Preparation method: in vitro, wheat germ expression system Product Quality tested by: 12.5% SDS-PAGE Stained with Coomassie Blue.
Restrictions:	For Research Use only

Handling

Buffer:	50 mM Tris-HCl, 10 mM reduced Glutathione, pH =8.0 in the elution buffer.
Handling Advice:	Aliquot to avoid repeated freezing and thawing.
Storage:	-80 °C
Storage Comment:	Best use within three months from the date of receipt of this protein.

Images

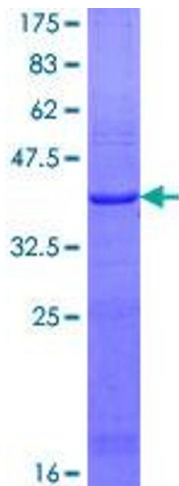


Image 1.