



[Go to Product page](#)

Datasheet for ABIN1309861

LST1 Protein (AA 1-118) (GST tag)

1 Image

Overview

Quantity:	10 µg
Target:	LST1
Protein Characteristics:	AA 1-118
Origin:	Human
Source:	Wheat germ
Protein Type:	Recombinant
Purification tag / Conjugate:	This LST1 protein is labelled with GST tag.
Application:	ELISA, Western Blotting (WB), Affinity Purification (AP), Antibody Array (AA)

Product Details

Purpose:	LST1 (Human) Recombinant Protein (P01)
Sequence:	MLSRNDDICI YGGLGLGGLL LLAVVLLSAC LCWLHRRVKR LERSWPRAQ SRNSTMHLGR GCQCPAVRDL TSGAETREAP RRIQELTMPA LLRTNPPEHP RHLPQPRRVD RVPLWSSQ
Characteristics:	Human LST1 full-length ORF (NP_009092.2, 1 a.a. - 118 a.a.) recombinant protein with GST-tag at N-terminal.
Purification:	in vitro wheat germ expression system

Target Details

Target:	LST1
Alternative Name:	LST1 (LST1 Products)

Target Details

Background:	Full Gene Name: leukocyte specific transcript 1 Synonyms: B144,D6S49E,LST-1,MGC119006,MGC119007
Gene ID:	7940
NCBI Accession:	NM_007161

Application Details

Application Notes:	Optimal working dilution should be determined by the investigator.
Comment:	Preparation method: in vitro, wheat germ expression system Product Quality tested by: 12.5% SDS-PAGE Stained with Coomassie Blue.
Restrictions:	For Research Use only

Handling

Buffer:	50 mM Tris-HCl, 10 mM reduced Glutathione, pH =8.0 in the elution buffer.
Handling Advice:	Aliquot to avoid repeated freezing and thawing.
Storage:	-80 °C
Storage Comment:	Best use within three months from the date of receipt of this protein.

Images

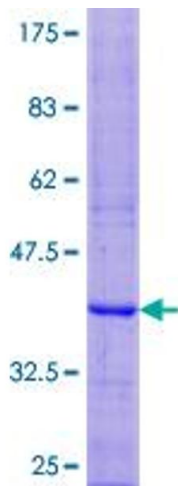


Image 1.