



[Go to Product page](#)

Datasheet for ABIN1309874

LTBP2 Protein (AA 1709-1818) (GST tag)

1 Image

Overview

Quantity:	10 µg
Target:	LTBP2
Protein Characteristics:	AA 1709-1818
Origin:	Human
Source:	Wheat germ
Protein Type:	Recombinant
Purification tag / Conjugate:	This LTBP2 protein is labelled with GST tag.
Application:	Western Blotting (WB), Affinity Purification (AP), Antibody Array (AA), ELISA

Product Details

Purpose:	LTBP2 (Human) Recombinant Protein (Q01)
Sequence:	LQPSELQPHY VASHPEPPAG FEGLQAECEG ILNGCENGRC VRVREGYTCD CFEGFQLDAA HMACVDVNEC DDLNGPAVLC VHGYCENTEG SYRCHCSPGY VAEAGPPHCT
Characteristics:	Human LTBP2 partial ORF (NP_000419, 1709 a.a. - 1818 a.a.) recombinant protein with GST-tag at N-terminal.
Purification:	in vitro wheat germ expression system

Target Details

Target:	LTBP2
Alternative Name:	LTBP2 (LTBP2 Products)

Target Details

Background:	Full Gene Name: latent transforming growth factor beta binding protein 2 Synonyms: C14orf141,LTBP3,MSTP031
Gene ID:	4053
NCBI Accession:	NM_000428
Pathways:	Growth Factor Binding

Application Details

Application Notes:	Optimal working dilution should be determined by the investigator.
Comment:	Preparation method: in vitro, wheat germ expression system Product Quality tested by: 12.5% SDS-PAGE Stained with Coomassie Blue.
Restrictions:	For Research Use only

Handling

Buffer:	50 mM Tris-HCl, 10 mM reduced Glutathione, pH =8.0 in the elution buffer.
Handling Advice:	Aliquot to avoid repeated freezing and thawing.
Storage:	-80 °C
Storage Comment:	Best use within three months from the date of receipt of this protein.

Images

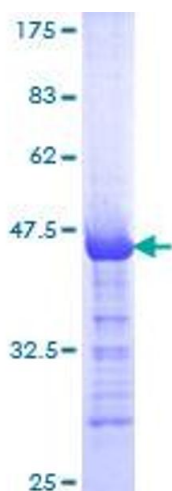


Image 1.