



[Go to Product page](#)

Datasheet for ABIN1309880

## Lactoferrin Protein (AA 1-711) (GST tag)

### 1 Image

#### Overview

Quantity:	2 µg
Target:	Lactoferrin (LTF)
Protein Characteristics:	AA 1-711
Origin:	Human
Source:	Wheat germ
Protein Type:	Recombinant
Purification tag / Conjugate:	This Lactoferrin protein is labelled with GST tag.
Application:	Western Blotting (WB), ELISA, Affinity Purification (AP), Antibody Array (AA)

#### Product Details

Purpose:	LTF (Human) Recombinant Protein (P01)
Sequence:	<p>MKLVFLVLLF LGALGLCLAG RRRRSVQWCA VSQPEATKCF QWQRNMRKVC GPPVSCIKRD  SPIQCIQAIA ENRADAVTLD GGFIEAGLA PYKLRPVAAE VYGTERQPRT HYYAVAVVKK  GGSFQLNELQ GLKSCHTGRRTAGWNVPIG TLRPFLNWTG PPEPIEAAVA RFFSASCVP  ADKGQFPNLC RLCAGTGENK CAFSSQEPYF SYSGAFKCLR DGAGDVAFIR ESTVFEDLSD  EAERDEYELL CPDNTRKPVDFKFDCHLARV PSHAVVARSV NGKEDAIWNL LRQAQEKFGK  DKSPKFQLFG SPSGQKDLLF KDSAIGFSRV PPRIDSGLYL GSGYFTAIQN LRKSEEEVAA  RRARVVWCAV GEQELRKCQNQ WSGLSEGSVT CSSASTTEDC IALVLKGEAD AMSLDGGYVY  TAGKCGLVVPV LAENYKSQQS SDPDPNCVDR PVEGYLAVAV VRRSDTSLTW NSVKGKKSCH  TAVDRTAGWN IPMGLLFNQT GSCKFDEYFS QSCAPGSDPR SNLALCALCIGD EQGENKCVPN  SNERYYGTYG AFRCLAENAG DVAFVKDVTV LQNTDGNNNE AWAKDLKLDLAD FALLCLDGRK  KPVTEARSCH LAMAPNHAVV SRMDKVERLK QVLLHQQAKF GRNGSDCPDK FCLFQSETKN</p>

## Product Details

---

LLFNDNTECL ARLHGKTTYE KYLGPQYVAG ITNLKKCSTS PLLEACEFLR K

Characteristics:	Human LTF full-length ORF ( AAH22347.1, 1 a.a. - 711 a.a.) recombinant protein with GST-tag at N-terminal.
Purification:	in vitro wheat germ expression system

## Target Details

---

Target:	Lactoferrin (LTF)
Alternative Name:	LTF ( <a href="#">LTF Products</a> )
Background:	Full Gene Name: lactotransferrin Synonyms: GIG12,HLF2,LF
Gene ID:	4057
Pathways:	<a href="#">Transition Metal Ion Homeostasis</a>

## Application Details

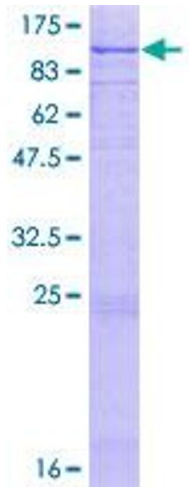
---

Application Notes:	Optimal working dilution should be determined by the investigator.
Comment:	Preparation method: in vitro, wheat germ expression system Product Quality tested by: 12.5% SDS-PAGE Stained with Coomassie Blue.
Restrictions:	For Research Use only

## Handling

---

Buffer:	50 mM Tris-HCl, 10 mM reduced Glutathione, pH =8.0 in the elution buffer.
Handling Advice:	Aliquot to avoid repeated freezing and thawing.
Storage:	-80 °C
Storage Comment:	Best use within three months from the date of receipt of this protein.



### SDS-PAGE

Image 1.