

Datasheet for ABIN1309883
LTV1 Protein (AA 1-475) (GST tag)



[Go to Product page](#)

1 Image

Overview

Quantity:	10 µg
Target:	LTV1
Protein Characteristics:	AA 1-475
Origin:	Human
Source:	Wheat germ
Protein Type:	Recombinant
Purification tag / Conjugate:	This LTV1 protein is labelled with GST tag.
Application:	ELISA, Western Blotting (WB), Affinity Purification (AP), Antibody Array (AA)

Product Details

Purpose:	LTV1 (Human) Recombinant Protein (P01)
Sequence:	MPHRKKKPF EKKKAVSFHL VHRQRDPLA ADESAPQRVL LPTQKIDNEE RRAEQRKYGV FFDDDYDYLQ HLKEPSGPSE LIPSSTFSAH NRREEKEETL VIPSTGIKLP SSVFASEFEE DVGLLNKAAP VSGPRLDFDP DIVAALDDDF DFDDPDNLE DDFILQANKA TGE EEGMDIQ KSENEDDSEW EDVDDEKGDS NDDYDSAGLL SDEDCMSVPG KTHRAIADHL FWSEETKSRF TEYSMTSSVM RRNEQLTLHD ERFKFEYEQY DDDEIGALDN AELEGSIQVD SNRLQEV LND YYKEKAENCV KLNTLEPLED QDLPMNELDE S EEEEMITVV LEEAKEKWDC ESICSTYSNL YNHPQLIKYQ PKPKQIRISS KTG IPLNVLP KKGLTAKQTE RIQMINGS DL PKVSTQPRSK NESKEDKRAR KQAIKEERKE RRVEKKANKL AFKLEKRRQE KELLNLKKNV EGLKL
Characteristics:	Human LTV1 full-length ORF (NP_116249.2, 1 a.a. - 475 a.a.) recombinant protein with GST-tag at N-terminal.

Product Details

Purification: in vitro wheat germ expression system

Target Details

Target: LTV1

Alternative Name: LTV1 ([LTV1 Products](#))

Background: Full Gene Name: LTV1 homolog (S. cerevisiae)
Synonyms: C6orf93,FLJ14909,dJ468K18.4

Gene ID: 84946

NCBI Accession: [NM_032860](#)

Application Details

Application Notes: Optimal working dilution should be determined by the investigator.

Comment: Preparation method: in vitro, wheat germ expression system
Product Quality tested by: 12.5% SDS-PAGE Stained with Coomassie Blue.

Restrictions: For Research Use only

Handling

Buffer: 50 mM Tris-HCl, 10 mM reduced Glutathione, pH =8.0 in the elution buffer.

Handling Advice: Aliquot to avoid repeated freezing and thawing.

Storage: -80 °C

Storage Comment: Best use within three months from the date of receipt of this protein.

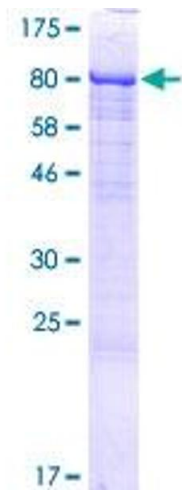


Image 1.