

Datasheet for ABIN1309902
LY6E Protein (AA 1-131) (GST tag)



[Go to Product page](#)

1 Image

Overview

Quantity:	10 µg
Target:	LY6E
Protein Characteristics:	AA 1-131
Origin:	Human
Source:	Wheat germ
Protein Type:	Recombinant
Purification tag / Conjugate:	This LY6E protein is labelled with GST tag.
Application:	Western Blotting (WB), ELISA, Affinity Purification (AP), Antibody Array (AA)

Product Details

Purpose:	LY6E (Human) Recombinant Protein (P01)
Sequence:	MKIFLPVLLA ALLGVERASS LMCFSCLNQK SNLYCLKPTI CSDQDNYCVT VSASAGIGNL VTFGHLSLTKT CSPACPIPEG VNVGVASMG I SCCQSFLCNF SAADGGLRAS VTLLGAGLLL SLLPALLRFG P
Characteristics:	Human LY6E full-length ORF (NP_002337.1, 1 a.a. - 131 a.a.) recombinant protein with GST-tag at N-terminal.
Purification:	in vitro wheat germ expression system

Target Details

Target:	LY6E
Alternative Name:	LY6E (LY6E Products)

Target Details

Background:	Full Gene Name: lymphocyte antigen 6 complex, locus E Synonyms: RIG-E,RIGE,SCA-2,SCA2,TSA-1
Gene ID:	4061
NCBI Accession:	NM_002346
Pathways:	Hormone Transport

Application Details

Application Notes:	Optimal working dilution should be determined by the investigator.
Comment:	Preparation method: in vitro, wheat germ expression system Product Quality tested by: 12.5% SDS-PAGE Stained with Coomassie Blue.
Restrictions:	For Research Use only

Handling

Buffer:	50 mM Tris-HCl, 10 mM reduced Glutathione, pH =8.0 in the elution buffer.
Handling Advice:	Aliquot to avoid repeated freezing and thawing.
Storage:	-80 °C
Storage Comment:	Best use within three months from the date of receipt of this protein.

Images

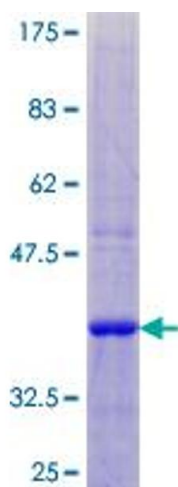


Image 1.