



[Go to Product page](#)

Datasheet for ABIN1309906

## LY6H Protein (AA 26-140) (GST tag)

### 1 Image

#### Overview

Quantity:	10 µg
Target:	LY6H
Protein Characteristics:	AA 26-140
Origin:	Human
Source:	Wheat germ
Protein Type:	Recombinant
Purification tag / Conjugate:	This LY6H protein is labelled with GST tag.
Application:	ELISA, Western Blotting (WB), Affinity Purification (AP), Antibody Array (AA)

#### Product Details

Purpose:	LY6H (Human) Recombinant Protein (P01)
Sequence:	LWCQDCTLTT NSSHCTPKQC QPSDTVCAV RITDPSSSRK DHSVNKMCAS SCDFVKRHFF SDYLMGFINS GILKVDVDCC EKDLNCGAAG AGHSPWALAG GLLLSLGPAL LWAGP
Characteristics:	Human LY6H full-length ORF ( AAH28894, 26 a.a. - 140 a.a.) recombinant protein with GST-tag at N-terminal.
Purification:	in vitro wheat germ expression system

#### Target Details

Target:	LY6H
Alternative Name:	LY6H ( <a href="#">LY6H Products</a> )

## Target Details

Background:	Full Gene Name: lymphocyte antigen 6 complex, locus H Synonyms: NMLY6
Gene ID:	4062

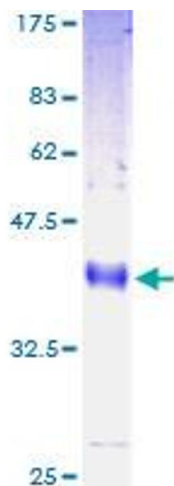
## Application Details

Application Notes:	Optimal working dilution should be determined by the investigator.
Comment:	Preparation method: in vitro, wheat germ expression system Product Quality tested by: 12.5% SDS-PAGE Stained with Coomassie Blue.
Restrictions:	For Research Use only

## Handling

Buffer:	50 mM Tris-HCl, 10 mM reduced Glutathione, pH =8.0 in the elution buffer.
Handling Advice:	Aliquot to avoid repeated freezing and thawing.
Storage:	-80 °C
Storage Comment:	Best use within three months from the date of receipt of this protein.

## Images



**Image 1.**