



[Go to Product page](#)

Datasheet for ABIN1309910

LY86 Protein (AA 1-162) (GST tag)

1 Image

Overview

Quantity:	25 µg
Target:	LY86
Protein Characteristics:	AA 1-162
Origin:	Human
Source:	Wheat germ
Protein Type:	Recombinant
Purification tag / Conjugate:	This LY86 protein is labelled with GST tag.
Application:	ELISA, Western Blotting (WB), Affinity Purification (AP), Antibody Array (AA)

Product Details

Purpose:	LY86 (Human) Recombinant Protein (P01)
Sequence:	MKGFTATLFL WTLIFPSCSG GGGGKAWPTH VVCSDSGLEV LYQSCDPLQD FGFSVEKCSK QLKSNINIRF GIILREDIKE LFLDLALMSQ GSSVLNFSYP ICEAALPKFS FCGRRKGEQI YYAGPVNNPE FTIPQGEYQV LLELYTEKRS TVACANATIM CS
Characteristics:	Human LY86 full-length ORF (NP_004262.1, 1 a.a. - 162 a.a.) recombinant protein with GST-tag at N-terminal.
Purification:	in vitro wheat germ expression system

Target Details

Target:	LY86
Alternative Name:	LY86 (LY86 Products)

Target Details

Background: Full Gene Name: lymphocyte antigen 86
Synonyms: MD-1,MMD-1,dJ80N2.1

Gene ID: 9450

NCBI Accession: [NM_004271](#)

Pathways: [Toll-Like Receptors Cascades](#)

Application Details

Application Notes: Optimal working dilution should be determined by the investigator.

Comment: Preparation method: in vitro, wheat germ expression system
Product Quality tested by: 12.5% SDS-PAGE Stained with Coomassie Blue.

Restrictions: For Research Use only

Handling

Buffer: 50 mM Tris-HCl, 10 mM reduced Glutathione, pH =8.0 in the elution buffer.

Handling Advice: Aliquot to avoid repeated freezing and thawing.

Storage: -80 °C

Storage Comment: Best use within three months from the date of receipt of this protein.

Images

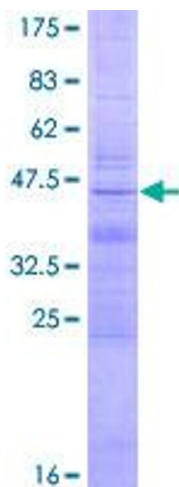


Image 1.