

Datasheet for ABIN1309913
LY9 Protein (AA 1-193) (GST tag)



[Go to Product page](#)

1 Image

Overview

Quantity:	10 µg
Target:	LY9 (CD229)
Protein Characteristics:	AA 1-193
Origin:	Human
Source:	Wheat germ
Protein Type:	Recombinant
Purification tag / Conjugate:	This LY9 protein is labelled with GST tag.
Application:	ELISA, Western Blotting (WB), Affinity Purification (AP), Antibody Array (AA)

Product Details

Purpose:	LY9 (Human) Recombinant Protein (P01)
Sequence:	MVAPKSHTDD WAPGPFSSKP QRSQLQIFSS VLQTSLLFLL MGLRASGKDS APTVWVGILG GSVTLPLNIS VDTEIENVIW IGPKNALAFA RPKENVTIMV KSYLGRLDIT KWSYSLCISN LTLNDAGSYK AQINQRNFEV TTEEEFTLFV YAPFIEKLSV HVIEGDHRTL LEGSGLESII STLAEPRVSV REG
Characteristics:	Human LY9 full-length ORF (NP_001028839.1, 1 a.a. - 193 a.a.) recombinant protein with GST-tag at N-terminal.
Purification:	in vitro wheat germ expression system

Target Details

Target:	LY9 (CD229)
---------	-------------

Target Details

Alternative Name:	LY9 (CD229 Products)
Background:	Full Gene Name: lymphocyte antigen 9 Synonyms: CD229,SLAMF3,hly9,mLY9
Gene ID:	4063
NCBI Accession:	NM_001033667
Pathways:	BCR Signaling

Application Details

Application Notes:	Optimal working dilution should be determined by the investigator.
Comment:	Preparation method: in vitro, wheat germ expression system Product Quality tested by: 12.5% SDS-PAGE Stained with Coomassie Blue.
Restrictions:	For Research Use only

Handling

Buffer:	50 mM Tris-HCl, 10 mM reduced Glutathione, pH =8.0 in the elution buffer.
Handling Advice:	Aliquot to avoid repeated freezing and thawing.
Storage:	-80 °C
Storage Comment:	Best use within three months from the date of receipt of this protein.

Images

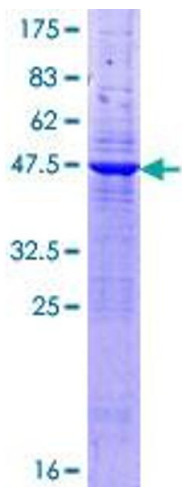


Image 1.