

Datasheet for ABIN1309925  
**LYN Protein (AA 413-512) (GST tag)**



[Go to Product page](#)

1 Image

## Overview

Quantity:	10 µg
Target:	LYN
Protein Characteristics:	AA 413-512
Origin:	Human
Source:	Wheat germ
Protein Type:	Recombinant
Purification tag / Conjugate:	This LYN protein is labelled with GST tag.
Application:	Western Blotting (WB), ELISA, Affinity Purification (AP), Antibody Array (AA)

## Product Details

Purpose:	LYN (Human) Recombinant Protein (Q01)
Sequence:	EAINFGCFTI KSDVWSFGIL LYEIVTYGKI PYPGRTNADV MTALSQGYRM PRVENCPEL YDIMKMCWKE KAEERPTFDY LQSVLDDFYT ATEGQYQQQP
Characteristics:	Human LYN partial ORF ( NP_002341, 413 a.a. - 512 a.a.) recombinant protein with GST-tag at N-terminal.
Purification:	in vitro wheat germ expression system

## Target Details

Target:	LYN
Alternative Name:	LYN ( <a href="#">LYN Products</a> )

## Target Details

Background:	Full Gene Name: v-yes-1 Yamaguchi sarcoma viral related oncogene homolog Synonyms: FLJ26625,JTK8
Gene ID:	4067
NCBI Accession:	<a href="#">NM_002350</a>
Pathways:	<a href="#">Fc-epsilon Receptor Signaling Pathway</a> , <a href="#">Hormone Transport</a> , <a href="#">Response to Growth Hormone Stimulus</a> , <a href="#">Cellular Response to Molecule of Bacterial Origin</a> , <a href="#">Regulation of Leukocyte Mediated Immunity</a> , <a href="#">Positive Regulation of Immune Effector Process</a> , <a href="#">CXCR4-mediated Signaling Events</a> , <a href="#">Thromboxane A2 Receptor Signaling</a> , <a href="#">Integrin Complex</a> , <a href="#">BCR Signaling</a>

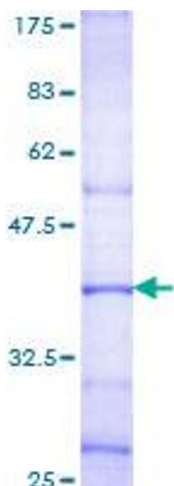
## Application Details

Application Notes:	Optimal working dilution should be determined by the investigator.
Comment:	Preparation method: in vitro, wheat germ expression system Product Quality tested by: 12.5% SDS-PAGE Stained with Coomassie Blue.
Restrictions:	For Research Use only

## Handling

Buffer:	50 mM Tris-HCl, 10 mM reduced Glutathione, pH =8.0 in the elution buffer.
Handling Advice:	Aliquot to avoid repeated freezing and thawing.
Storage:	-80 °C
Storage Comment:	Best use within three months from the date of receipt of this protein.

## Images



**Image 1.**