



[Go to Product page](#)

Datasheet for ABIN1309927

## LYPD3 Protein (AA 1-346) (GST tag)

### 1 Image

#### Overview

Quantity:	10 µg
Target:	LYPD3
Protein Characteristics:	AA 1-346
Origin:	Human
Source:	Wheat germ
Protein Type:	Recombinant
Purification tag / Conjugate:	This LYPD3 protein is labelled with GST tag.
Application:	ELISA, Western Blotting (WB), Affinity Purification (AP), Antibody Array (AA)

#### Product Details

Purpose:	LYPD3 (Human) Recombinant Protein (P01)
Sequence:	MDPARKAGAQ AMIWTAGWLL LLLLRRGGAQA LECYSCVQKA DDGCSPNKMK TVKCAPGVDV CTEAVGAVET IHGQFSLAVR GCGSGLPGKN DRGLDLHGLL AFIQLQCAQ DRCNAKLNLT SRALDPAGNE SAYPPNGVEC YSCVGLSREA CQGTSPPVVS CYNASDHVYK GCFDGNVTLT AANVTVSLPV RGCVQDEFCT RDGVTGPGFT LSGSCCQGSR CNSDLRNKTY FSPRIPLVR LPPPEPTTVA STTSVTTSTS APVRPTSTK PMPAPTSQTP RQGEHEASR DEEPRLTGGA AGHQDRSNSG QYPAKGGPQQ PHNKGCVAPT AGLAALLLAV AAGVLL
Characteristics:	Human LYPD3 full-length ORF ( NP_055215.2, 1 a.a. - 346 a.a.) recombinant protein with GST-tag at N-terminal.
Purification:	in vitro wheat germ expression system

## Target Details

Target:	LYPD3
Alternative Name:	LYPD3 ( <a href="#">LYPD3 Products</a> )
Background:	Full Gene Name: LY6/PLAUR domain containing 3 Synonyms: C4.4A
Gene ID:	27076
NCBI Accession:	<a href="#">NM_014400</a>

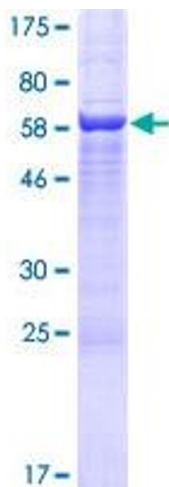
## Application Details

Application Notes:	Optimal working dilution should be determined by the investigator.
Comment:	Preparation method: in vitro, wheat germ expression system Product Quality tested by: 12.5% SDS-PAGE Stained with Coomassie Blue.
Restrictions:	For Research Use only

## Handling

Buffer:	50 mM Tris-HCl, 10 mM reduced Glutathione, pH =8.0 in the elution buffer.
Handling Advice:	Aliquot to avoid repeated freezing and thawing.
Storage:	-80 °C
Storage Comment:	Best use within three months from the date of receipt of this protein.

## Images



**Image 1.**