



[Go to Product page](#)

Datasheet for ABIN1309942

## LYPLA2 Protein (AA 144-231) (GST tag)

### 1 Image

#### Overview

Quantity:	10 µg
Target:	LYPLA2
Protein Characteristics:	AA 144-231
Origin:	Human
Source:	Wheat germ
Protein Type:	Recombinant
Purification tag / Conjugate:	This LYPLA2 protein is labelled with GST tag.
Application:	Western Blotting (WB), ELISA, Affinity Purification (AP), Antibody Array (AA)

#### Product Details

Purpose:	LYPLA2 (Human) Recombinant Protein (Q01)
Sequence:	ALSCWLPLHR AFPQAANGSA KDLAILQCHG ELDPMPVPRF GALTAEKLRV VVTPARVQFK TYPGVMHSSC PQEMAAVKEF LEKLLPPV
Characteristics:	Human LYPLA2 partial ORF ( NP_009191, 144 a.a. - 231 a.a.) recombinant protein with GST-tag at N-terminal.
Purification:	in vitro wheat germ expression system

#### Target Details

Target:	LYPLA2
Alternative Name:	LYPLA2 ( <a href="#">LYPLA2 Products</a> )

## Target Details

Background:	Gene: lysophospholipase II Synonyms: APT-2, DJ886K2.4
Gene ID:	11313
NCBI Accession:	<a href="#">NM_007260</a>

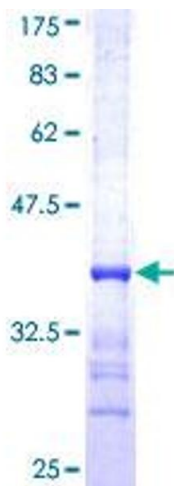
## Application Details

Application Notes:	Optimal working dilution should be determined by the investigator.
Restrictions:	For Research Use only

## Handling

Buffer:	50 mM Tris-HCl, 10 mM reduced Glutathione, pH =8.0 in the elution buffer.
Handling Advice:	Aliquot to avoid repeated freezing and thawing.
Storage:	-80 °C
Storage Comment:	Best use within three months from the date of receipt of this protein.

## Images



**Image 1.**