

Datasheet for ABIN1309947
LYSMD2 Protein (AA 1-215) (GST tag)



[Go to Product page](#)

1 Image

Overview

Quantity:	10 µg
Target:	LYSMD2
Protein Characteristics:	AA 1-215
Origin:	Human
Source:	Wheat germ
Protein Type:	Recombinant
Purification tag / Conjugate:	This LYSMD2 protein is labelled with GST tag.
Application:	ELISA, Western Blotting (WB), Affinity Purification (AP), Antibody Array (AA)

Product Details

Purpose:	LYSMD2 (Human) Recombinant Protein (P01)
Sequence:	MADSSPALS L REGGPRAPRP SAPSPPPRSR SGSESEEAE L SLSLARTKTR SYGSTASVRA PLGAGVIERH VEHRVRAGDT LQGIALKYGV TMEQIKRANK LFTNDCIFLK KTLNIPVISE KPLLFNGLNS IDSPENETAD NSFSQEEEPV VAGEDLPPPS PQESDVQPVQ PEEVSARDFL QRLDLQIKLS TQAAKKLKEE SRDEESPYAT SLYHS
Characteristics:	Human LYSMD2 full-length ORF (NP_699205.1, 1 a.a. - 215 a.a.) recombinant protein with GST-tag at N-terminal.
Purification:	in vitro wheat germ expression system

Target Details

Target:	LYSMD2
---------	--------

Target Details

Alternative Name:	LYSMD2 (LYSMD2 Products)
Background:	Full Gene Name: LysM, putative peptidoglycan-binding, domain containing 2 Synonyms: DKFZp686I2243,MGC35274
Gene ID:	256586
NCBI Accession:	NM_153374

Application Details

Application Notes:	Optimal working dilution should be determined by the investigator.
Comment:	Preparation method: in vitro, wheat germ expression system Product Quality tested by: 12.5% SDS-PAGE Stained with Coomassie Blue.
Restrictions:	For Research Use only

Handling

Buffer:	50 mM Tris-HCl, 10 mM reduced Glutathione, pH =8.0 in the elution buffer.
Handling Advice:	Aliquot to avoid repeated freezing and thawing.
Storage:	-80 °C
Storage Comment:	Best use within three months from the date of receipt of this protein.

Images

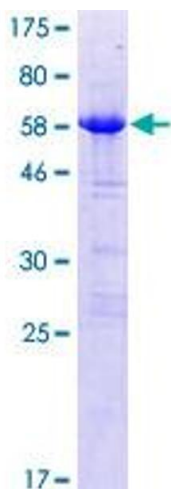


Image 1.