

Datasheet for ABIN1309959

**Lysozyme-Like 1 Protein (LYZL1) (AA 1-194) (GST tag)**[Go to Product page](#)**1** Image

## Overview

Quantity:	10 µg
Target:	Lysozyme-Like 1 (LYZL1)
Protein Characteristics:	AA 1-194
Origin:	Human
Source:	Wheat germ
Protein Type:	Recombinant
Purification tag / Conjugate:	This Lysozyme-Like 1 protein is labelled with GST tag.
Application:	ELISA, Western Blotting (WB), Affinity Purification (AP), Antibody Array (AA)

## Product Details

Purpose:	LYZL1 (Human) Recombinant Protein (P01)
Sequence:	MQDAPLSCLS PTRWSSVSSA DSTEKSASGA GTRNLPFQFC LRQALRMKAA GILTIGCLV TGAESKIYTR CKLAKIFSRA GLDNYWGFSL GNWICMAYYE SGYNTTAPT V LDDGSIDYGI FQINSFAWCR RGKLKENNHC HVACSAITD DLTDIICAR KIVKETQGMN YWQGWKKHCE GRDLSEWKKG CEVS
Characteristics:	Human LYZL1 full-length ORF ( AAH21730.1, 1 a.a. - 194 a.a.) recombinant protein with GST-tag at N-terminal.
Purification:	in vitro wheat germ expression system

## Target Details

Target:	Lysozyme-Like 1 (LYZL1)
---------	-------------------------

Target Details

Alternative Name:	LYZL1 ( <a href="#">LYZL1 Products</a> )
Background:	Full Gene Name: lysozyme-like 1 Synonyms: KAAG648,LYC2,MGC33408,PRO1278,bA534G20.1
Gene ID:	84569

Application Details

Application Notes:	Optimal working dilution should be determined by the investigator.
Comment:	Preparation method: in vitro, wheat germ expression system Product Quality tested by: 12.5% SDS-PAGE Stained with Coomassie Blue.
Restrictions:	For Research Use only

Handling

Buffer:	50 mM Tris-HCl, 10 mM reduced Glutathione, pH =8.0 in the elution buffer.
Handling Advice:	Aliquot to avoid repeated freezing and thawing.
Storage:	-80 °C
Storage Comment:	Best use within three months from the date of receipt of this protein.

Images

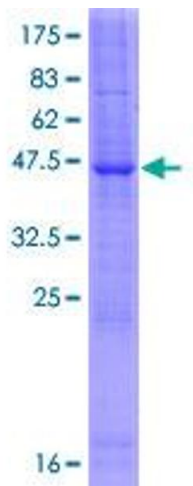


Image 1.