

Datasheet for ABIN1309961

Lysozyme-Like 2 Protein (LYZL2) (AA 1-194) (GST tag)[Go to Product page](#)**1** Image

Overview

Quantity:	25 µg
Target:	Lysozyme-Like 2 (LYZL2)
Protein Characteristics:	AA 1-194
Origin:	Human
Source:	Wheat germ
Protein Type:	Recombinant
Purification tag / Conjugate:	This Lysozyme-Like 2 protein is labelled with GST tag.
Application:	ELISA, Western Blotting (WB), Affinity Purification (AP), Antibody Array (AA)

Product Details

Purpose:	LYZL2 (Human) Recombinant Protein (P01)
Sequence:	MQDAPLSCLS PTKWSSVSSA DSTEKSASAA GTRNLPFQFC LRQALRMKAA GILTLIGCLV TGAESKIYTR CKLAKIFSRA GLDNYWGFSL GNWICMAYYE SGYNTTAQTV LDDGSIDYGI FQINSFAWCR RGKLENNHC HVACSALVTD DLTAIICAK KIVKETQGMN YWQGWKKHCE GRDLSDWKKD CEVS
Characteristics:	Human LYZL2 full-length ORF (NP_898881.2, 1 a.a. - 194 a.a.) recombinant protein with GST-tag at N-terminal.
Purification:	in vitro wheat germ expression system

Target Details

Target:	Lysozyme-Like 2 (LYZL2)
---------	-------------------------

Target Details

Alternative Name:	LYZL2 (LYZL2 Products)
Background:	Full Gene Name: lysozyme-like 2 Synonyms:
Gene ID:	119180
NCBI Accession:	NM_183058

Application Details

Application Notes:	Optimal working dilution should be determined by the investigator.
Comment:	Preparation method: in vitro, wheat germ expression system Product Quality tested by: 12.5% SDS-PAGE Stained with Coomassie Blue.
Restrictions:	For Research Use only

Handling

Buffer:	50 mM Tris-HCl, 10 mM reduced Glutathione, pH =8.0 in the elution buffer.
Handling Advice:	Aliquot to avoid repeated freezing and thawing.
Storage:	-80 °C
Storage Comment:	Best use within three months from the date of receipt of this protein.

Images

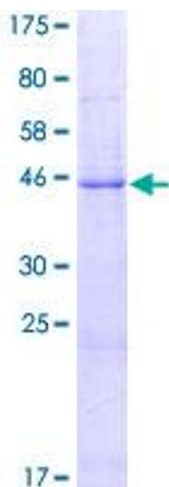


Image 1.