

Datasheet for ABIN1309980

M6PR Protein (AA 211-277) (GST tag)[Go to Product page](#)**1** Image

Overview

Quantity:	10 µg
Target:	M6PR
Protein Characteristics:	AA 211-277
Origin:	Human
Source:	Wheat germ
Protein Type:	Recombinant
Purification tag / Conjugate:	This M6PR protein is labelled with GST tag.
Application:	Western Blotting (WB), ELISA, Affinity Purification (AP), Antibody Array (AA)

Product Details

Purpose:	M6PR (Human) Recombinant Protein (Q01)
Sequence:	QRLVVGAKGM EQFPHLAFWQ DLGNLVADGC DFVCRSKPRN VPAAYRGVGD DQLGEESEER DDHLLPM
Characteristics:	Human M6PR partial ORF (NP_002346, 211 a.a. - 277 a.a.) recombinant protein with GST-tag at N-terminal.
Purification:	in vitro wheat germ expression system

Target Details

Target:	M6PR
Alternative Name:	M6PR (M6PR Products)

Target Details

Background:	Full Gene Name: mannose-6-phosphate receptor (cation dependent) Synonyms: CD-MPR,FLJ32994,MPR46,SMPR
Gene ID:	4074
NCBI Accession:	NM_002355

Application Details

Application Notes:	Optimal working dilution should be determined by the investigator.
Comment:	Preparation method: in vitro, wheat germ expression system Product Quality tested by: 12.5% SDS-PAGE Stained with Coomassie Blue.
Restrictions:	For Research Use only

Handling

Buffer:	50 mM Tris-HCl, 10 mM reduced Glutathione, pH =8.0 in the elution buffer.
Handling Advice:	Aliquot to avoid repeated freezing and thawing.
Storage:	-80 °C
Storage Comment:	Best use within three months from the date of receipt of this protein.

Images

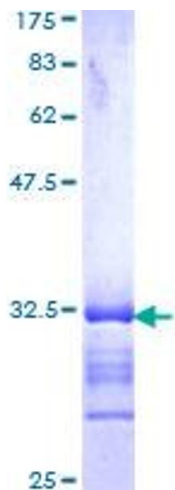


Image 1.