

Datasheet for ABIN1309983

MAB21L1 Protein (AA 250-358) (GST tag)



[Go to Product page](#)

1 Image

Overview

Quantity:	10 µg
Target:	MAB21L1
Protein Characteristics:	AA 250-358
Origin:	Human
Source:	Wheat germ
Protein Type:	Recombinant
Purification tag / Conjugate:	This MAB21L1 protein is labelled with GST tag.
Application:	ELISA, Western Blotting (WB), Affinity Purification (AP), Antibody Array (AA)

Product Details

Purpose:	MAB21L1 (Human) Recombinant Protein (Q01)
Sequence:	CLSILKTLRD RHLELPGQPL NNYHMKTLVS YECEKHPRES DWDESCLGDR LNGILLQLIS CLQCRRCPHY FLPNLDLFQG KPHSALENAA KQTWRLAREI LTNPKSLEK
Characteristics:	Human MAB21L1 partial ORF (NP_005575, 250 a.a. - 358 a.a.) recombinant protein with GST-tag at N-terminal.
Purification:	in vitro wheat germ expression system

Target Details

Target:	MAB21L1
Alternative Name:	MAB21L1 (MAB21L1 Products)

Target Details

Background: Full Gene Name: mab-21-like 1 (C. elegans)
Synonyms: CAGR1,FLJ10197,Nbla00126

Gene ID: 4081

NCBI Accession: [NM_005584](#)

Application Details

Application Notes: Optimal working dilution should be determined by the investigator.

Comment: Preparation method: in vitro, wheat germ expression system
Product Quality tested by: 12.5% SDS-PAGE Stained with Coomassie Blue.

Restrictions: For Research Use only

Handling

Buffer: 50 mM Tris-HCl, 10 mM reduced Glutathione, pH =8.0 in the elution buffer.

Handling Advice: Aliquot to avoid repeated freezing and thawing.

Storage: -80 °C

Storage Comment: Best use within three months from the date of receipt of this protein.

Images

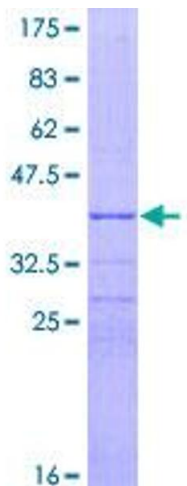


Image 1.