



[Go to Product page](#)

Datasheet for ABIN1310009

## MAFB Protein (AA 1-323) (GST tag)

### 1 Image

#### Overview

Quantity:	10 µg
Target:	MAFB
Protein Characteristics:	AA 1-323
Origin:	Human
Source:	Wheat germ
Protein Type:	Recombinant
Purification tag / Conjugate:	This MAFB protein is labelled with GST tag.
Application:	ELISA, Western Blotting (WB), Affinity Purification (AP), Antibody Array (AA)

#### Product Details

Purpose:	MAFB (Human) Recombinant Protein (P01)
Sequence:	MAAELSMGPE LPTSPLAMEY VNDFDLLKFD VKKEPLGRAE RPGRPCTRLQ PAGSVSSTPL STPCSSVPSS PSFSPTEQKT HLEDLYWMAS NYQQMNPAL NLTPEDAVEA LIGSHPVPQP LQSFDSFRGA HHHHHHHHPH PHHAYPGAGV AHDELGPHAH PHHHHHHQAS PPPSSAASPA QQLPTSHPGP GPHATASATA AGGNGSVEDR FSDDQLVSMS VRELNRHLRG FTKDEVIRLK QKRRTLKNRG YAQSCRYKRV QQKHLENEK TQLIQVEQL KQEVSLARE RDAYKVKCEK LANSGFREAG STSDSPSSPE FFL
Characteristics:	Human MAFB full-length ORF ( NP_005452.2, 1 a.a. - 323 a.a.) recombinant protein with GST-tag at N-terminal.
Purification:	in vitro wheat germ expression system

## Target Details

Target:	MAFB
Alternative Name:	MAFB ( <a href="#">MAFB Products</a> )
Background:	Full Gene Name: v-maf musculoaponeurotic fibrosarcoma oncogene homolog B (avian) Synonyms: KRML,MGC43127
Gene ID:	9935
NCBI Accession:	<a href="#">NM_005461</a>

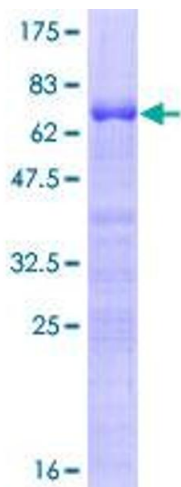
## Application Details

Application Notes:	Optimal working dilution should be determined by the investigator.
Comment:	Preparation method: in vitro, wheat germ expression system Product Quality tested by: 12.5% SDS-PAGE Stained with Coomassie Blue.
Restrictions:	For Research Use only

## Handling

Buffer:	50 mM Tris-HCl, 10 mM reduced Glutathione, pH =8.0 in the elution buffer.
Handling Advice:	Aliquot to avoid repeated freezing and thawing.
Storage:	-80 °C
Storage Comment:	Best use within three months from the date of receipt of this protein.

## Images



**Image 1.**