

Datasheet for ABIN1310031

MAGEA11 Protein (AA 1-319) (GST tag)



[Go to Product page](#)

1 Image

Overview

Quantity:	10 µg
Target:	MAGEA11
Protein Characteristics:	AA 1-319
Origin:	Human
Source:	Wheat germ
Protein Type:	Recombinant
Purification tag / Conjugate:	This MAGEA11 protein is labelled with GST tag.
Application:	ELISA, Western Blotting (WB), Affinity Purification (AP), Antibody Array (AA)

Product Details

Purpose:	MAGEA11 (Human) Recombinant Protein (P01)
Sequence:	MPLEQRSQHC KPEEGLQAQE EDLGLVGAQA LQAEQEAAF FSSTLNVGTL EELPAAESPS PPQSPQEESF SPTAMDAIFG SLSDEGSGSQ EKEGPSTSPD LIDPESFSQD ILHDKIIDLV HLLLRKYRVK GLITKAEMLG SVIKNYEDYF PEIFREASVC MQLLFGIDVK EVDPTSHSYV LVTSLNLSYD GIQCNEQSMP KSGLLIIVLG VIFMEGNCIP EEVMWEVLSI MGVYAGREHF LFGEPKRLLT QNWWQEKYLV YRQVPGTDP A CYEFLWGPRA HAETSKMKVL EYIANANGRD PTSYPSTLYED ALREEGEGV
Characteristics:	Human MAGEA11 full-length ORF (AAH04479.1, 1 a.a. - 319 a.a.) recombinant protein with GST-tag at N-terminal.
Purification:	in vitro wheat germ expression system

Target Details

Target:	MAGEA11
Alternative Name:	MAGEA11 (MAGEA11 Products)
Background:	Full Gene Name: melanoma antigen family A, 11 Synonyms: MAGE-11,MAGE11,MAGEA-11,MGC10511
Gene ID:	4110

Application Details

Application Notes:	Optimal working dilution should be determined by the investigator.
Comment:	Preparation method: in vitro, wheat germ expression system Product Quality tested by: 12.5% SDS-PAGE Stained with Coomassie Blue.
Restrictions:	For Research Use only

Handling

Buffer:	50 mM Tris-HCl, 10 mM reduced Glutathione, pH =8.0 in the elution buffer.
Handling Advice:	Aliquot to avoid repeated freezing and thawing.
Storage:	-80 °C
Storage Comment:	Best use within three months from the date of receipt of this protein.

Images

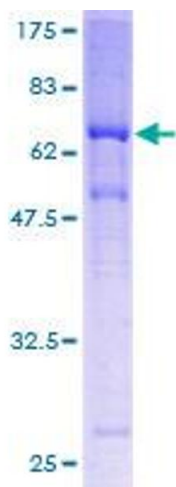


Image 1.