

Datasheet for ABIN1310079

## MAGED1 Protein (AA 1-778) (GST tag)



[Go to Product page](#)

### 1 Image

#### Overview

Quantity:	25 µg
Target:	MAGED1
Protein Characteristics:	AA 1-778
Origin:	Human
Source:	Wheat germ
Protein Type:	Recombinant
Purification tag / Conjugate:	This MAGED1 protein is labelled with GST tag.
Application:	ELISA, Western Blotting (WB), Affinity Purification (AP), Antibody Array (AA)

#### Product Details

Purpose:	MAGED1 (Human) Recombinant Protein (P02)
Sequence:	<p>MAQKMDCGAG LLGFQAEASV EDSALLMQTL MEAIQISEAP PTNQATAAAS PQSSQPPTAN  EMADIQVSAA AARPKSAFKV QNATTKGPNG VYDFSQAHNA KDVPNTQPKA AFKSQNATPK  GPNAAYDFSQ AATTGELAAN KSEMAFKAQN ATTKVGP NAT YNFSQSLNAN DLANSRPKTP  FKAWNDTTKA PTADTQTQNV NQAKMATSQA DIETDPGISE PDGATAQTSA DGSQAQNLES  RTIIRGKRTR KINNLNVEEN SSGDQRRAPL AAGTWRSAPV PVTTQNPPGA PPNVLWQTPL  AWQNPSGWQN QTARQTPPAR QSPPARQTPP AWQNPVAWQN PVIWPNPVIW QNPVIWPNPI  VWPGPVVWPN PLAWQNPPGW QTPPGWQTPP GWQGPPDWQG PPDWPLPPDW PLPPDWPLPT  DWPLPPDWIP ADWPIPPDWQ NLRPSPNLRP SPNSRASQNP GAAQPRDVAL LQERANKLVK  YLMLKDYTKV PIKRSEMLRD IIREYTDVYP EIIRACFVL EKKFGIQLKE IDKEEHLYIL ISTPESLAGI  LGTTKDTPKL GLLLVLGVI FMNGNRASEA VLWEALRKMG LRPVGRHPLL GDLRKLTTYE  FVKQKYLDYR RVPNSNPPEY EFLWGLRSYH ETSKMKVLRV IAEVQKRDPD DWTAQFMEAA</p>

## Product Details

---

DEALDALDAA AAEAEARAEA RTRMGIGDEA VSGPWSWDDI EFELLTWDEE GDFGDPWSRI  
PFTFWARYHQ NARSRFPQTF AGPIIGPGGT ASANFAANFG AIGFFWVE

Characteristics: Human MAGED1 full-length ORF ( NP\_001005332.1, 1 a.a. - 778 a.a.) recombinant protein with GST-tag at N-terminal.

Purification: in vitro wheat germ expression system

## Target Details

---

Target: MAGED1

Alternative Name: MAGED1 ([MAGED1 Products](#))

Background: Full Gene Name: melanoma antigen family D, 1  
Synonyms: DLXIN-1,NRAGE

Gene ID: 9500

NCBI Accession: [NM\\_001005332](#)

Pathways: [Neurotrophin Signaling Pathway](#)

## Application Details

---

Application Notes: Optimal working dilution should be determined by the investigator.

Comment: Preparation method: in vitro, wheat germ expression system  
Product Quality tested by: 12.5% SDS-PAGE Stained with Coomassie Blue.

Restrictions: For Research Use only

## Handling

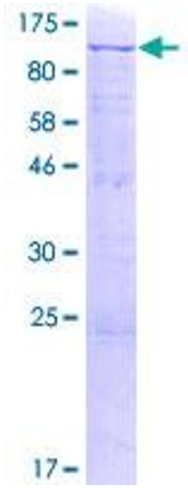
---

Buffer: 50 mM Tris-HCl, 10 mM reduced Glutathione, pH =8.0 in the elution buffer.

Handling Advice: Aliquot to avoid repeated freezing and thawing.

Storage: -80 °C

Storage Comment: Best use within three months from the date of receipt of this protein.



**Image 1.**