



Datasheet for ABIN1310082

MAGED2 Protein (AA 1-606) (GST tag)



[Go to Product page](#)

1 Image

Overview

Quantity:	25 µg
Target:	MAGED2
Protein Characteristics:	AA 1-606
Origin:	Human
Source:	Wheat germ
Protein Type:	Recombinant
Purification tag / Conjugate:	This MAGED2 protein is labelled with GST tag.
Application:	Western Blotting (WB), ELISA, Affinity Purification (AP), Antibody Array (AA)

Product Details

Purpose:	MAGED2 (Human) Recombinant Protein (P01)
Sequence:	MSDTSESGAG LTRFQAEASE KDSSSMQTL LTVTQNVEVP ETPKASKALE VSEDVKVSKA SGVSKATEVS KTPEAREAPA TQASSTTQLT DTQVLAAENK SLAADTKKQN ADPQAVTMPA TETKKVSHVA DTKVNTKAQE TEAAPSQAPA DEPEPESAAA QSQENQDTRP KVKAKKARKV KHLDGEEDGS SDQSQASGTT GGRRVSKALM ASMARRASRG PIAFWARRAS RTRLAAWARR ALLSLRSPKA RRGKARRRAA KLQSSQEPEA PPRDVALQ GRANDLVKYL LAKDQTKIPI KRSDMLKDII KEYTDVYPEI IERAGYSLEK VFGIQLKEID KNDHLYILLS TLEPTDAGIL GTTKDSPKLG LLMVLLSIIF MNGNRSSEAV IWEVLRKLG L RPIGHHSLFG DVKKLITDEF VKQKYLDYAR VPNSNPPEYE FFWGLRSYVE TSKMKVLKFA CKVQKKDPKE WAAQYREAME ADLKAAAEAA AEAKARAEIR ARMGIGLGSE NAAGPCNWDE ADIGPWAKAR IQAGAEAKAK AQESGSASTG ASTSTNNSAS ASASTSGGFS AGASLTATLT FGLFAGLGGA GASTSGSSGA CGFSYK

Product Details

Characteristics:	Human MAGED2 full-length ORF (NP_055414.2, 1 a.a. - 606 a.a.) recombinant protein with GST-tag at N-terminal.
Purification:	in vitro wheat germ expression system

Target Details

Target:	MAGED2
Alternative Name:	MAGED2 (MAGED2 Products)
Background:	Full Gene Name: melanoma antigen family D, 2 Synonyms: 11B6,BCG1,HCA10,JCL-1,MAGE-D2,MAGED,MGC8386
Gene ID:	10916
NCBI Accession:	NM_014599

Application Details

Application Notes:	Optimal working dilution should be determined by the investigator.
Comment:	Preparation method: in vitro, wheat germ expression system Product Quality tested by: 12.5% SDS-PAGE Stained with Coomassie Blue.
Restrictions:	For Research Use only

Handling

Buffer:	50 mM Tris-HCl, 10 mM reduced Glutathione, pH =8.0 in the elution buffer.
Handling Advice:	Aliquot to avoid repeated freezing and thawing.
Storage:	-80 °C
Storage Comment:	Best use within three months from the date of receipt of this protein.

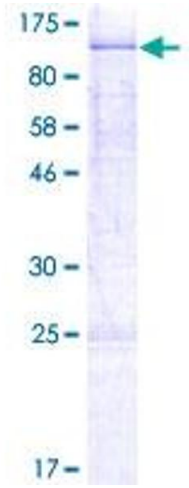


Image 1.