



[Go to Product page](#)

Datasheet for ABIN1310085

MAGED4B Protein (AA 1-333) (GST tag)

1 Image

Overview

Quantity:	10 µg
Target:	MAGED4B
Protein Characteristics:	AA 1-333
Origin:	Human
Source:	Wheat germ
Protein Type:	Recombinant
Purification tag / Conjugate:	This MAGED4B protein is labelled with GST tag.
Application:	ELISA, Western Blotting (WB), Affinity Purification (AP), Antibody Array (AA)

Product Details

Purpose:	MAGED4B (Human) Recombinant Protein (P01)
Sequence:	MIKDYKKIPI KRADMLKDVI REYDEHFPEI IERATYTTLEK KFGIHLKEID KEEHLYILVC TRDSSARLLG KTKDTPRLSL LLVILGVIFM NGRASEAVL WEALRKMGLR PGVRHPFLGD LRKLITDDFV KQKNPELREE TPLSMAPSWY LEYKKIPNSN PPEYEFLWGL RARHETSKMR VLRFIAQNQN RDPREWKAHF LEAVDDAFKT MDVDMAEHA RAQMRAQMNI GDEALIGRWS WDDIQVELLT WDEDGDFGDA WARIPFAFWA RYHQYILNSN RANRRATWRA GVSSGTNGGA STSVLDGPST SSTIRTRNAA RAGASFFSWI QHR
Characteristics:	Human MAGED4B full-length ORF (AAH01207.1, 1 a.a. - 333 a.a.) recombinant protein with GST-tag at N-terminal.
Purification:	in vitro wheat germ expression system

Target Details

Target:	MAGED4B
Alternative Name:	MAGED4B (MAGED4B Products)
Background:	Full Gene Name: melanoma antigen family D, 4B Synonyms: MGC3210,MGC88639
Gene ID:	81557

Application Details

Application Notes:	Optimal working dilution should be determined by the investigator.
Comment:	Preparation method: in vitro, wheat germ expression system Product Quality tested by: 12.5% SDS-PAGE Stained with Coomassie Blue.
Restrictions:	For Research Use only

Handling

Buffer:	50 mM Tris-HCl, 10 mM reduced Glutathione, pH =8.0 in the elution buffer.
Handling Advice:	Aliquot to avoid repeated freezing and thawing.
Storage:	-80 °C
Storage Comment:	Best use within three months from the date of receipt of this protein.

Images

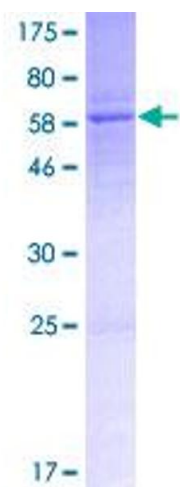


Image 1.