



[Go to Product page](#)

Datasheet for ABIN1310087

MAGEF1 Protein (AA 198-307) (GST tag)

1 Image

Overview

Quantity:	10 µg
Target:	MAGEF1
Protein Characteristics:	AA 198-307
Origin:	Human
Source:	Wheat germ
Protein Type:	Recombinant
Purification tag / Conjugate:	This MAGEF1 protein is labelled with GST tag.
Application:	ELISA, Western Blotting (WB), Affinity Purification (AP), Antibody Array (AA)

Product Details

Purpose:	MAGEF1 (Human) Recombinant Protein (Q01)
Sequence:	VQPSKYHFLF GYPKRLIMED FVQQRYSYR RVPHTNPPEY EFSWGPRSNL EISKMEVLGF VAKLHKKEPQ HWPVQYREAL ADEADRARAK ARAEASMRAR ASARAGIHLW
Characteristics:	Human MAGEF1 partial ORF (NP_071432, 198 a.a. - 307 a.a.) recombinant protein with GST-tag at N-terminal.
Purification:	in vitro wheat germ expression system

Target Details

Target:	MAGEF1
Alternative Name:	MAGEF1 (MAGEF1 Products)

Target Details

Background: Full Gene Name: melanoma antigen family F, 1
Synonyms: MGC19617

Gene ID: 64110

NCBI Accession: [NM_022149](#)

Application Details

Application Notes: Optimal working dilution should be determined by the investigator.

Comment: Preparation method: in vitro, wheat germ expression system
Product Quality tested by: 12.5% SDS-PAGE Stained with Coomassie Blue.

Restrictions: For Research Use only

Handling

Buffer: 50 mM Tris-HCl, 10 mM reduced Glutathione, pH =8.0 in the elution buffer.

Handling Advice: Aliquot to avoid repeated freezing and thawing.

Storage: -80 °C

Storage Comment: Best use within three months from the date of receipt of this protein.

Images

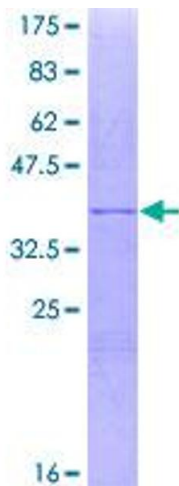


Image 1.