



[Go to Product page](#)

Datasheet for ABIN1310106

MAK16 Protein (AA 1-300) (GST tag)

1 Image

Overview

Quantity:	25 µg
Target:	MAK16
Protein Characteristics:	AA 1-300
Origin:	Human
Source:	Wheat germ
Protein Type:	Recombinant
Purification tag / Conjugate:	This MAK16 protein is labelled with GST tag.
Application:	ELISA, Western Blotting (WB), Affinity Purification (AP), Antibody Array (AA)

Product Details

Purpose:	RBM13 (Human) Recombinant Protein (P01)
Sequence:	<p>MQSDDVIWDT LGNKQFCSFK IRTKTQSFCR NEYSLTGLCN RSSCPLANSQ YATIKEEKGGQ</p> <p>CYLYMKVIER AAFPRRLWER VRLSKNYEKA LEQIDENLIY WPRFIRHKCK QRFTKITQYL</p> <p>IRIRKLT LKR QRKLVPLSKK VERREKRREE KALIAAQLDN AIEKELLERL KQDTYGDIYN</p> <p>FPIHAFDKAL EQQEAESDSS DTEEKDDDDD DEEDVGKREF VEDGEVDESD ISDFEDMDKL</p> <p>DASSDEDQDG KSSSEEEEEK ALSAKHKGKM PLRGPLQRKR AYVEIEYEQE TEPVAKAKTT</p>
Characteristics:	Human RBM13 full-length ORF (NP_115898.2, 1 a.a. - 300 a.a.) recombinant protein with GST-tag at N-terminal.
Purification:	in vitro wheat germ expression system

Target Details

Target:	MAK16
Alternative Name:	MAK16 (MAK16 Products)
Background:	Full Gene Name: MAK16 homolog (S. cerevisiae) Synonyms: MAK16L,RBM13
Gene ID:	84549
NCBI Accession:	NM_032509

Application Details

Application Notes:	Optimal working dilution should be determined by the investigator.
Comment:	Preparation method: in vitro, wheat germ expression system Product Quality tested by: 12.5% SDS-PAGE Stained with Coomassie Blue.
Restrictions:	For Research Use only

Handling

Buffer:	50 mM Tris-HCl, 10 mM reduced Glutathione, pH =8.0 in the elution buffer.
Handling Advice:	Aliquot to avoid repeated freezing and thawing.
Storage:	-80 °C
Storage Comment:	Best use within three months from the date of receipt of this protein.

Images

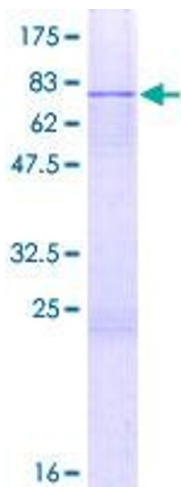


Image 1.