



[Go to Product page](#)

Datasheet for ABIN1310109

MAL2 Protein (AA 1-176) (GST tag)

1 Image

Overview

Quantity:	2 µg
Target:	MAL2
Protein Characteristics:	AA 1-176
Origin:	Human
Source:	Wheat germ
Protein Type:	Recombinant
Purification tag / Conjugate:	This MAL2 protein is labelled with GST tag.
Application:	ELISA, Western Blotting (WB), Affinity Purification (AP), Antibody Array (AA)

Product Details

Purpose:	MAL2 (Human) Recombinant Protein (P01)
Sequence:	MSAGGASVPP PNPVAVSFPP PRVTLPAGPD ILRTYSGAFV CLEILFGGLV WILVASSNVP LPLLQGWVMF VSVTAFFFSL LFLGMFLSGM VAQIDANWNF LDFAYHFTVF VFYFGAFLLE AAATSLHDLH CNTTITGQPL LSDNQYNINV AASIFAFMTT ACYGCSSLGLA LRRWRP
Characteristics:	Human MAL2 full-length ORF (AAH12367, 1 a.a. - 176 a.a.) recombinant protein with GST-tag at N-terminal.
Purification:	in vitro wheat germ expression system

Target Details

Target:	MAL2
Alternative Name:	MAL2 (MAL2 Products)

Target Details

Background:	Full Gene Name: mal, T-cell differentiation protein 2 Synonyms:
Gene ID:	114569

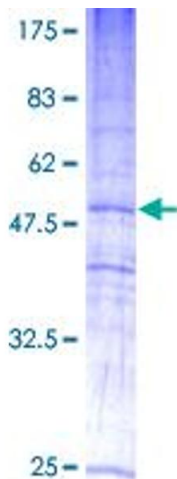
Application Details

Application Notes:	Optimal working dilution should be determined by the investigator.
Comment:	Preparation method: in vitro, wheat germ expression system Product Quality tested by: 12.5% SDS-PAGE Stained with Coomassie Blue.
Restrictions:	For Research Use only

Handling

Buffer:	50 mM Tris-HCl, 10 mM reduced Glutathione, pH =8.0 in the elution buffer.
Handling Advice:	Aliquot to avoid repeated freezing and thawing.
Storage:	-80 °C
Storage Comment:	Best use within three months from the date of receipt of this protein.

Images



SDS-PAGE

Image 1.