



Datasheet for ABIN1310111
MALT1 Protein (AA 1-813) (GST tag)



[Go to Product page](#)

1 Image

Overview

Quantity:	10 µg
Target:	MALT1
Protein Characteristics:	AA 1-813
Origin:	Human
Source:	Wheat germ
Protein Type:	Recombinant
Purification tag / Conjugate:	This MALT1 protein is labelled with GST tag.
Application:	ELISA, Western Blotting (WB), Affinity Purification (AP), Antibody Array (AA)

Product Details

Purpose:	MALT1 (Human) Recombinant Protein (P01)
Sequence:	<p>MSLLGDPLQA LPPSAAPTGP LLAPPAGATL NRLREPLLR LSELLDQAPE GRGWRRRLAEL AGSRGRLRLS CLDLEQCSLK VLEPEGSPSL CLLKLMGEKG CTVTELSDFL QAMEHTEVLQ LLSPPGIKIT VNPESKAVLA GQFVKLCCRA TGHPFVQYQW FKMNKEIPNG NTSELIFNAV HVKDAGFYVC RVNNNFTFEF SQWSQLDVCD IPESFQRSVD GVSESKLQIC VEPTSQKLMF GSTLVLQCVA VGSPIPHYQW FKNELPLTHE TTKLYMVPYV DLEHQGTWC HVYNDRDSQD SKKVEIIDE LNNLGHPDNK EQTTDQPLAK DKVALLIGNM NYREHPKKA PLVDVYELTN LLRQLDFKVV SLLDLTEYEM RNAVDEFLLL LDKGVYGLLY YAGHGYENFG NSFMVPVDAP NPYRSENLCL VQNILKLMQE KETGLNVFLL DMCRKRNDYD DTIPILDALK VTANIVFGYA TCQGAFAFEI QHSLGLANGIF MKFLKDRLL E DKKITVLLDE VAEDMGKCHL TKGKQALEIR SSLSEKRALT DPIQGTEYSA ESLVRNLQWA KAHPEPESMC LKFDGCVQIQ LGFAAEFSNV MIIYTSIVYK PPEIIMCDAY VTDPLDLDI DPKDANKGTP EETGSYLVSK DLPKHCLYTR</p>

Product Details

LSSLQKLKEH LVFTVCLSYQ YSGLEDTVED KQEVNVGKPL IAKLDMHRGL GRKTCFQTCL
MSGPYQSSA ATSGGAGHYH SLQDPFHGVY HSHPGNPSNV TPADSCHCSR TPDAFISSFA
HHASCHFSRS NVPVETTDEI PFSFSDRLRI SEK

Characteristics: Human MALT1 full-length ORF (NP_776216.1, 1 a.a. - 813 a.a.) recombinant protein with GST-tag at N-terminal.

Purification: in vitro wheat germ expression system

Target Details

Target: MALT1

Alternative Name: MALT1 ([MALT1 Products](#))

Background: Full Gene Name: mucosa associated lymphoid tissue lymphoma translocation gene 1
Synonyms: DKFZp434L132,MLT,MLT1

Gene ID: 10892

NCBI Accession: [NM_173844](#)

Pathways: [TCR Signaling](#), [Fc-epsilon Receptor Signaling Pathway](#), [Regulation of Leukocyte Mediated Immunity](#), [Positive Regulation of Immune Effector Process](#), [Production of Molecular Mediator of Immune Response](#), [BCR Signaling](#), [Ubiquitin Proteasome Pathway](#), [S100 Proteins](#)

Application Details

Application Notes: Optimal working dilution should be determined by the investigator.

Comment: Preparation method: in vitro, wheat germ expression system
Product Quality tested by: 12.5% SDS-PAGE Stained with Coomassie Blue.

Restrictions: For Research Use only

Handling

Buffer: 50 mM Tris-HCl, 10 mM reduced Glutathione, pH =8.0 in the elution buffer.

Handling Advice: Aliquot to avoid repeated freezing and thawing.

Storage: -80 °C

Storage Comment: Best use within three months from the date of receipt of this protein.

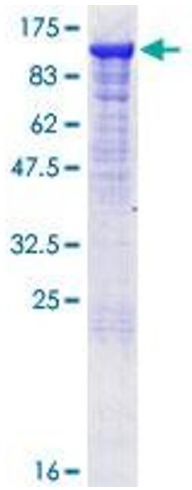


Image 1.