



[Go to Product page](#)

Datasheet for ABIN1310119

MAML2 Protein (AA 796-894) (GST tag)

1 Image

Overview

Quantity:	10 µg
Target:	MAML2
Protein Characteristics:	AA 796-894
Origin:	Human
Source:	Wheat germ
Protein Type:	Recombinant
Purification tag / Conjugate:	This MAML2 protein is labelled with GST tag.
Application:	ELISA, Western Blotting (WB), Affinity Purification (AP), Antibody Array (AA)

Product Details

Purpose:	MAML2 (Human) Recombinant Protein (Q01)
Sequence:	RPPPDYKDQR RNVGNMQPTA QYSGGSSTIS LNSNQALANP VSTHTILTPN SLLSTSHGT RMPSTLSTAVQ NMGMYGNLPC NQPNTYSVTS GMNQLTQQR
Characteristics:	Human MAML2 partial ORF (NP_115803, 796 a.a. - 894 a.a.) recombinant protein with GST-tag at N-terminal.
Purification:	in vitro wheat germ expression system

Target Details

Target:	MAML2
Alternative Name:	MAML2 (MAML2 Products)

Target Details

Background:	Full Gene Name: mastermind-like 2 (Drosophila) Synonyms: DKFZp686N0150,KIAA1819,MAM-3,MAM2,MAM3,MGC176701,MLL-MAML2
Gene ID:	84441
NCBI Accession:	NM_032427

Application Details

Application Notes:	Optimal working dilution should be determined by the investigator.
Comment:	Preparation method: in vitro, wheat germ expression system Product Quality tested by: 12.5% SDS-PAGE Stained with Coomassie Blue.
Restrictions:	For Research Use only

Handling

Buffer:	50 mM Tris-HCl, 10 mM reduced Glutathione, pH =8.0 in the elution buffer.
Handling Advice:	Aliquot to avoid repeated freezing and thawing.
Storage:	-80 °C
Storage Comment:	Best use within three months from the date of receipt of this protein.

Images

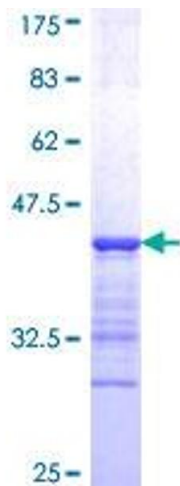


Image 1.