



[Go to Product page](#)

Datasheet for ABIN1310121

MAML3 Protein (AA 1024-1131) (GST tag)

1 Image

Overview

Quantity:	10 µg
Target:	MAML3
Protein Characteristics:	AA 1024-1131
Origin:	Human
Source:	Wheat germ
Protein Type:	Recombinant
Purification tag / Conjugate:	This MAML3 protein is labelled with GST tag.
Application:	ELISA, Western Blotting (WB), Affinity Purification (AP), Antibody Array (AA)

Product Details

Purpose:	MAML3 (Human) Recombinant Protein (Q01)
Sequence:	QMMPSLPGQQ GTSQARPMVM SGLSQGVPGM PAFSQPPAQQ QIPSGSFAPS SQSQAYERNA PQDVSYNYSG DGAGGSFPGL PDGADLVDSI IKGGPGDEWM QELDELFG
Characteristics:	Human MAML3 partial ORF (NP_061187, 1024 a.a. - 1131 a.a.) recombinant protein with GST-tag at N-terminal.
Purification:	in vitro wheat germ expression system

Target Details

Target:	MAML3
Alternative Name:	MAML3 (MAML3 Products)

Target Details

Background:	Full Gene Name: mastermind-like 3 (Drosophila) Synonyms: CAGH3,ERDA3,GDN,MAM-2,MAM2,TNRC3
Gene ID:	55534
NCBI Accession:	NM_018717

Application Details

Application Notes:	Optimal working dilution should be determined by the investigator.
Comment:	Preparation method: in vitro, wheat germ expression system Product Quality tested by: 12.5% SDS-PAGE Stained with Coomassie Blue.
Restrictions:	For Research Use only

Handling

Buffer:	50 mM Tris-HCl, 10 mM reduced Glutathione, pH =8.0 in the elution buffer.
Handling Advice:	Aliquot to avoid repeated freezing and thawing.
Storage:	-80 °C
Storage Comment:	Best use within three months from the date of receipt of this protein.

Images

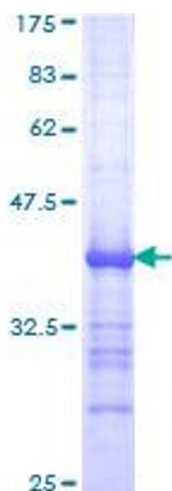


Image 1.