

Datasheet for ABIN1310145  
**MANEA Protein (AA 1-462) (GST tag)**



[Go to Product page](#)

1 Image

Overview

|                               |   |
|-------------------------------|---|
| Quantity:                     | 10 µg   |
| Target:                       | MANEA   |
| Protein Characteristics:      | AA 1-462  |
| Origin:                       | Human   |
| Source:                       | Wheat germ  |
| Protein Type:                 | Recombinant   |
| Purification tag / Conjugate: | This MANEA protein is labelled with GST tag.                                  |
| Application:                  | ELISA, Western Blotting (WB), Affinity Purification (AP), Antibody Array (AA) |

Product Details

|                  |  |
|------------------|--|
| Purpose:         | MANEA (Human) Recombinant Protein (P01)  |
| Sequence:        | MAKFRRRRTCI ILALFILFIF SLMMGLKMLR PNTATFGAPF GLDLLPELHQ RTIHLGKNFD<br>FQKSDRINSE TNTKNLKSVE ITMKPSKASE LNLDELPLN NYLHVFFYSW YGNPQFDGKY<br>IHWNHPVLEH WDPRIAKNYP QGRHNPPDDI GSSFYPELGS YSSRDPSVIE THMRQMRSAS<br>IGVLALSWYP PDVNDENGEP TDNLVPTILD KAHKYNLKV T FHI EPYSNRD DQNM YK N VKY<br>IIDKYGNHPA FYRYKTKTGN ALPMFYVYDS YITKPEKWAN LLTTS GSR SI RNSPYDGLFI<br>ALLVEEKHKY DILQSGFDGI YTYFATNGFT YGSSHQNWAS LKLFCDKYNL IFIPSVGPGY<br>IDTSIRPWNT QNTRNRINGK YYEIGLSAAL QTRPSLISIT SFNEWHEGTQ IEKAVPKRTS<br>NTVYLDYRPH KPGLYLELTR KWSEKYSKER ATYALDRQLP VS |
| Characteristics: | Human MANEA full-length ORF ( NP_078917.2, 1 a.a. - 462 a.a.) recombinant protein with GST-tag at N-terminal.  |

## Product Details

---

Purification: in vitro wheat germ expression system

## Target Details

---

Target: MANEA

Alternative Name: MANEA ([MANEA Products](#))

Background: Full Gene Name: mannosidase, endo-alpha  
Synonyms: DKFZp686D20120, ENDO, FLJ12838, hEndo

Gene ID: 79694

NCBI Accession: [NM\\_024641](#)

## Application Details

---

Application Notes: Optimal working dilution should be determined by the investigator.

Comment: Preparation method: in vitro, wheat germ expression system  
Product Quality tested by: 12.5% SDS-PAGE Stained with Coomassie Blue.

Restrictions: For Research Use only

## Handling

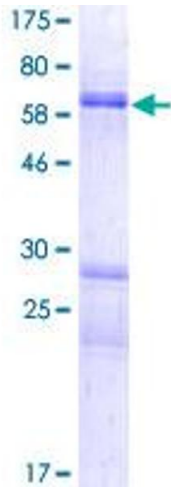
---

Buffer: 50 mM Tris-HCl, 10 mM reduced Glutathione, pH =8.0 in the elution buffer.

Handling Advice: Aliquot to avoid repeated freezing and thawing.

Storage: -80 °C

Storage Comment: Best use within three months from the date of receipt of this protein.



**Image 1.**