

Datasheet for ABIN1310147

## MANEAL Protein (AA 1-235) (GST tag)



[Go to Product page](#)

### 1 Image

#### Overview

Quantity:	25 µg
Target:	MANEAL
Protein Characteristics:	AA 1-235
Origin:	Human
Source:	Wheat germ
Protein Type:	Recombinant
Purification tag / Conjugate:	This MANEAL protein is labelled with GST tag.
Application:	ELISA, Western Blotting (WB), Affinity Purification (AP), Antibody Array (AA)

#### Product Details

Purpose:	MANEAL (Human) Recombinant Protein (P01)
Sequence:	MITGSPQMTW CPPFWTPPIS TASRYGSHGA FYRYKNSMGK SLPLFYIYDS YLTSPEAWAH LLTPNGPHSI RNTPYDGVFI ALLVEEGHGH DILAAGFDGM YTYFASNGFS FGSSHQNWKA VKNFCDANL MFIPSVGPY IDTSIRPWNN HNTRNRVNGK YYETALQAAL TVRPEIVSIT SFNEWHEGTQ IEKAIPKKTTP TRLYLDYLPH QPSLYLELTR RWAEHFIKEK EQWLM
Characteristics:	Human MANEAL full-length ORF ( NP_689709.1, 1 a.a. - 235 a.a.) recombinant protein with GST-tag at N-terminal.
Purification:	in vitro wheat germ expression system

#### Target Details

Target:	MANEAL
---------	--------

## Target Details

---

Alternative Name:	MANEAL ( <a href="#">MANEAL Products</a> )
Background:	Full Gene Name: mannosidase, endo-alpha-like Synonyms: FLJ31434,MGC78681,RP11-109P14.3
Gene ID:	149175
NCBI Accession:	<a href="#">NM_152496</a>

## Application Details

---

Application Notes:	Optimal working dilution should be determined by the investigator.
Comment:	Preparation method: in vitro, wheat germ expression system Product Quality tested by: 12.5% SDS-PAGE Stained with Coomassie Blue.
Restrictions:	For Research Use only

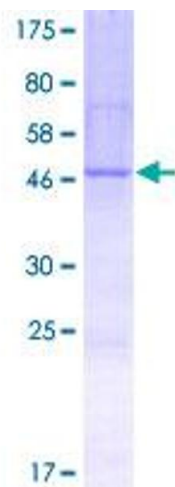
## Handling

---

Buffer:	50 mM Tris-HCl, 10 mM reduced Glutathione, pH =8.0 in the elution buffer.
Handling Advice:	Aliquot to avoid repeated freezing and thawing.
Storage:	-80 °C
Storage Comment:	Best use within three months from the date of receipt of this protein.

## Images

---



**Image 1.**