

Datasheet for ABIN1310162  
**MAP1S Protein (AA 1-1059) (GST tag)**



[Go to Product page](#)

1 Image

Overview

Quantity:	2 µg
Target:	MAP1S
Protein Characteristics:	AA 1-1059
Origin:	Human
Source:	Wheat germ
Protein Type:	Recombinant
Purification tag / Conjugate:	This MAP1S protein is labelled with GST tag.
Application:	Western Blotting (WB), ELISA, Affinity Purification (AP), Antibody Array (AA)

Product Details

Purpose:	MAP1S (Human) Recombinant Protein (P01)
Sequence:	<p>MAAVAGSGAA AAPSSLLLVV GSEFGSPGLL TYVLEELERG IRSWDVDPGV CNLDEQLKVF  VSRHSATFSS IVKGQSRSLHH RGDNLETLVL LNPSDKSLYD ELRNLLDPA SHKLLVLGAP  CLEETGELLL QTGGFSPHHF LQVLKDREIR DILATTPPPV QPPILTITCP TFGDWAQLAP  AVPGLQGALR LQLRLNPPAQ LPNSEGLCEF LEYVAESLEP PSPFELLEPP TSGGFLRLGR  PCCYIFPGGL GDAFFAVNG FTVLVNGGSN PKSSFVKLVR HLDRVDAVLV THPGADSLPG  LNSLLRRKLA ERSEVAAGGG SWDDRLRRLI SPNLGVVFFN ACEAASRLAR GEDEAELALS  LLAQLGITPL PLSRGPVPAK PTVLFEKMGV GRLDMYVLHP PSAGAERTLA CVCALLVWHP  AGPGEKVVRV LFPGCTPPAC LLDGLVRLQH LRFLREPVVT PQDLEGPGRV ESKEVSGSRD  SSKREGLLAT HPRPGQERPG VARKEPARAE APRKTEKEAK TPRELKDKPK PSVSRTQPRE  VRRRAASSVPN LKKTNAQAAP KPRKAPSTSH SGFPPVANGP RSPPSLRCEG ASPPSAACGS  PASQLVATPS LELGPIPAGE EKALELPLAA SSIPRPRTPS PESHRSAPAG SERLSLSPLR</p>

## Product Details

---

GGEAGPDASP TVTTPTVTTP SLPAEVGSPH STEVDESLSV SFEQVLPPSA PTSEAGLSLP  
LRGPRARRSA SPHDVDLCLV SPCEFEHRKA VPMAPAPASP GSSNDSSARS QERAGGLGAE  
ETPPTSVMSES LPTLSDSDPV PLAPGAADSD EDTEGFGVPR HDPLPDPLKV PPPLPDPSSI  
CMVDPEMLPP KTARQTENVS RTRKPLARPN SRAAAPKATP VAAAKTKGLA GGDRASRPLS  
ARSEPSEKGG RAPLSRKSST PKTATRGPSG SASSRPGVSA TPPKSPVYLD LAYLPSGSSA  
HLVDEEFFQR VRALCYVISG QDQRKEEGMR AVLDALLASK QHWDRDLQVT LIPTFDSVAM  
HTWYAETHAR HQALGITVLG SNSMVSMQDD AFPACKVEF

Characteristics: Human MAP1S full-length ORF ( AAH80547.1, 1 a.a. - 1059 a.a.) recombinant protein with GST-tag at N-terminal.

Purification: in vitro wheat germ expression system

## Target Details

---

Target: MAP1S

Alternative Name: MAP1S ([MAP1S Products](#))

Background: Full Gene Name: microtubule-associated protein 1S  
Synonyms: BPY2IP1,C19orf5,FLJ10669,MAP8,MGC133087,VCY2IP-1,VCY2IP1

Gene ID: 55201

## Application Details

---

Application Notes: Optimal working dilution should be determined by the investigator.

Comment: Preparation method: in vitro, wheat germ expression system  
Product Quality tested by: 12.5% SDS-PAGE Stained with Coomassie Blue.

Restrictions: For Research Use only

## Handling

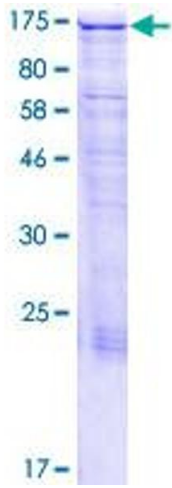
---

Buffer: 50 mM Tris-HCl, 10 mM reduced Glutathione, pH =8.0 in the elution buffer.

Handling Advice: Aliquot to avoid repeated freezing and thawing.

Storage: -80 °C

Storage Comment: Best use within three months from the date of receipt of this protein.



**Image 1.**