

Datasheet for ABIN1310163

MAP1S Protein (AA 929-1026) (GST tag)[Go to Product page](#)**1** Image

Overview

Quantity:	10 µg
Target:	MAP1S
Protein Characteristics:	AA 929-1026
Origin:	Human
Source:	Wheat germ
Protein Type:	Recombinant
Purification tag / Conjugate:	This MAP1S protein is labelled with GST tag.
Application:	Western Blotting (WB), ELISA, Affinity Purification (AP), Antibody Array (AA)

Product Details

Purpose:	BPY2IP1 (Human) Recombinant Protein (Q01)
Sequence:	SGSASSRPGV SATPPKSPVY LDLAYLPSGS SAHLVDEEFF QRVRALCYVI SGQDQRKEEG MRAVLDALLA SKQHWDRDLQ VTLIPTFDSV AMHTWYAE
Characteristics:	Human BPY2IP1 partial ORF (NP_060644.4, 929 a.a. - 1026 a.a.) recombinant protein with GST-tag at N-terminal.
Purification:	in vitro wheat germ expression system

Target Details

Target:	MAP1S
Alternative Name:	MAP1S (MAP1S Products)

Target Details

Background:	Full Gene Name: microtubule-associated protein 1S Synonyms: BPY2IP1,C19orf5,FLJ10669,MAP8,MGC133087,VCY2IP-1,VCY2IP1
Gene ID:	55201
NCBI Accession:	NM_018174

Application Details

Application Notes:	Optimal working dilution should be determined by the investigator.
Comment:	Preparation method: in vitro, wheat germ expression system Product Quality tested by: 12.5% SDS-PAGE Stained with Coomassie Blue.
Restrictions:	For Research Use only

Handling

Buffer:	50 mM Tris-HCl, 10 mM reduced Glutathione, pH =8.0 in the elution buffer.
Handling Advice:	Aliquot to avoid repeated freezing and thawing.
Storage:	-80 °C
Storage Comment:	Best use within three months from the date of receipt of this protein.

Images

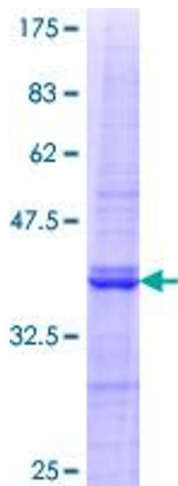


Image 1.