

Datasheet for ABIN1310202

MAP3K13 Protein (AA 1-966) (GST tag)



[Go to Product page](#)

1 Image

Overview

Quantity:	10 µg
Target:	MAP3K13
Protein Characteristics:	AA 1-966
Origin:	Human
Source:	Wheat germ
Protein Type:	Recombinant
Purification tag / Conjugate:	This MAP3K13 protein is labelled with GST tag.
Application:	ELISA, Western Blotting (WB), Affinity Purification (AP), Antibody Array (AA)

Product Details

Purpose:	MAP3K13 (Human) Recombinant Protein (P01)
Sequence:	MANFQEHLSC SSSPHLPFSE SKTFNGLQDE LTAMGNHPSP KLEDDQQEKG MVRTELIESV HSPVTTTTLT SVSEDSRDQF ENSVLQLREH DESETAVSQG NSNTVDGEST SGTEDIKIQF SRSGSGSGGF LEGLFGCLRP VVNIIGKAYS TDYKLQQQDT WEVPFEEISE LQWLGSGAQQ AVFLGKFRAE EVAIKKVREQ NETDIKHLRK LKHPNIIAFK GVCTQAPCYC IIMEYCAHGQ LYEVL RAGRK ITPRLLVDWS TGIASGMNYL HLHKIIHRDL KSPNVLVTHT DAVKISDFGT SKELSDKSTK MSFAGTVAWM APEVIRNEPV SEKVDIWSFG VWLWELLTGE IPYKDVDSSA IIVGWGSNSL HLPVPSTCPD GFKILMKQTW QSKPRNRPSF RQTLMHLDIA SADVLATPQE TYFKSQAERW EEVKKHFEDI KSEGTCIHLR DEELIRRRRE ELRHALDIRE HYERKLERAN NLYMELSAIM LQLEMREKEL IKREQAVEKK YPGTYKRHPV RPIIHPNAME KLMKRKGVPH KSGMQTKRPD LLRSEGIPTT EVAPTASPLS GSPKMSTSSS KSRYRSKPRH RRGNSRGSMS DFAAILKNQP AQENSPHPTY LHQAQSQYPS LHHHNSLQQQ YQQPPPAMSQ SHHPRLNMHG

Product Details

QDIATCANNL RYFGPAAALR SPLSNHAQRQ LPGSSPDLIS TAMAADCWRS SEPDKGQAGP
WGCCQADAYD PCLQCRPEQY GSLDIPSAEP VGRSPDLSKS PAHNPLENA QSSEKTEENE
FSGCRSESSL GTSHLGTTPA LPRKTRPLQK SGDDSSSEEEE GEVDSEVEFP RRQRPHRCIS
SCQSYSTFSS ENFSVSDGEE GNTSDHSNSP DELADKLEDR LAEKLDLLS QTPEIPIDIS
SHSDGLSDKE CAVRRVKTQM SLGKLCVEER GYENPMQFEE SDCDSSDGEC SDATVRTNKH
YSSATW

Characteristics: Human MAP3K13 full-length ORF (NP_004712.1, 1 a.a. - 966 a.a.) recombinant protein with GST-tag at N-terminal.

Purification: in vitro wheat germ expression system

Target Details

Target: MAP3K13

Alternative Name: MAP3K13 ([MAP3K13 Products](#))

Background: Full Gene Name: mitogen-activated protein kinase kinase kinase 13
Synonyms: LZK,MGC133196

Gene ID: 9175

NCBI Accession: [NM_004721](#)

Pathways: [Signaling Events mediated by VEGFR1 and VEGFR2](#)

Application Details

Application Notes: Optimal working dilution should be determined by the investigator.

Comment: Preparation method: in vitro, wheat germ expression system
Product Quality tested by: 12.5% SDS-PAGE Stained with Coomassie Blue.

Restrictions: For Research Use only

Handling

Buffer: 50 mM Tris-HCl, 10 mM reduced Glutathione, pH =8.0 in the elution buffer.

Handling Advice: Aliquot to avoid repeated freezing and thawing.

Storage: -80 °C

Storage Comment: Best use within three months from the date of receipt of this protein.

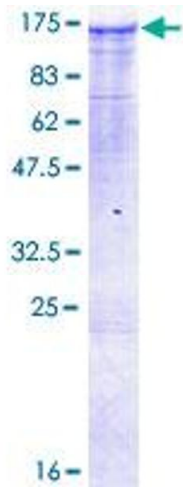


Image 1.